



# FUND FACT SHEET

All data as of October 31, 2024 unless otherwise stated

## Fund Objective and Strategy

The Fund aims to achieve long-term capital and income growth by investing in a diversified portfolio of fixed income and equity securities. The Fund aims to outperform its benchmark, which is composed of 50% BPI Philippine Government Bond Index and 50% Philippine Stock Exchange Index.

## Fund Details

Fund Manager	BPI WEALTH – A Trust Corporation
Inception Date	June 15, 2017
Fund Classification	Balanced Fund
Fund Size	PHP 56.20 Million
Fund Currency	Philippine Peso
No. of Holdings	40
Fund Management Fee	1.75% per annum

## Highest and Lowest Unit Price Achieved

Initial (15 June 2017)	1.0000
Highest (8 October 2024)	1.0900
Lowest (24 March 2020)	0.8083
NAVPU – 31 October 2024	1.0580

## Risk Classification

The Fund is suitable for investors with an aggressive profile or for those who take long-term views. As a marked-to-market UITF, the Fund's net asset value and total return may fall as well as rise as a result of stock prices and interest rates movements. On redemption of units, an investor may receive an amount less than the original amount of investment. Prior to investment in the Fund, the investor shall undergo a client suitability assessment procedure to determine whether the Fund is appropriate for him considering his investment objective, risk tolerance, preferences and experience.

## BPI-Philam Active Allocation Fund Market Commentary

The BPI Government Bond Index fell month-on-month, losing 0.36% in October as Philippine government bond yields increased by an average of 15 basis points (bps). Average daily trading volume for the month reached Php 39.6 billion, down from Php50.2 billion in September, with most trades concentrated in 5 and 10-year securities. The Bureau of the Treasury (BTr) held three FXTN auctions in October, fully awarding the 5-, 7- and 10-year tenors. Auction highs were generally aligned with secondary market bids at the time, with the BTr awarding at 5.508%, 5.690%, and 5.870%, respectively.

On the domestic front, inflation continued its downward trend as it decelerated to 1.9% in September from 3.3% in August, much lower than economists' median estimate of 2.5%. The lower-than-expected inflation was driven by slower food price increases and a decline in transportation costs. Consequently, the Bangko Sentral ng Pilipinas cut rates by 25 basis points during its policy meeting in October, citing easing price pressures. The BSP will continue to vigilantly monitor economic data releases in determining its policy actions moving forward.

Internationally, US inflation decelerated from 2.5% in August to 2.4% in September, in line with market estimates. However, despite evidence of easing inflation, US Treasuries were extremely volatile for the month as investors anticipated the upcoming US elections in early November.

The Philippine Stock Exchange Index (PSEI) cooled in October following three consecutive months of strong performances. At the beginning of the month, the local bourse continued its ascent to north of 7,500 mark backed by the release of lower-than-expected local inflation print in September at 1.9%. Consequently, the Bangko Sentral ng Pilipinas (BSP) reduced policy rates by 25 basis points to 6.0% for the second time in 2024. However, the PSEI failed to overcome the 7,500 to 7,600 resistance level as profit-taking took place. This coincided with weakness on the Philippine Peso which closed to 58.10 or -3.69% month-on-month. Moreover, risk-off stance was adopted by market players as they awaited the result of the US election. The PSEI gave up 1.78% month-on-month to 7,142.96.

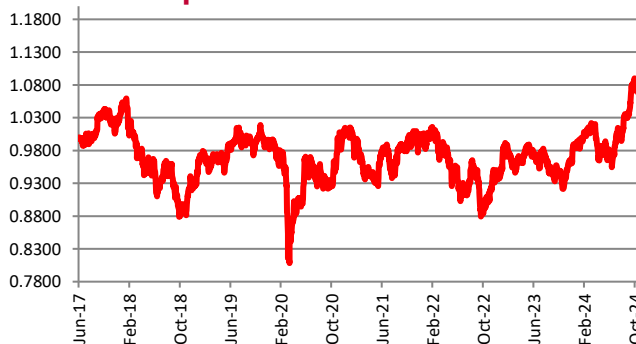
The market turnover slowed to Php5 billion or -24% month-on-month in October. Meanwhile, foreigners continued to be net buyers at US\$22 million, which marked the 4th consecutive month of net foreign buying. Top foreign bought stocks were AC (+US\$24.5 million), BPI (+US\$15 million) and GLO (+US\$10.0 million). In terms of participation level, it was an even split between foreigners and locals at 50%.

On a per stock basis, the top three index gainers for the month include: MER (+11.82%), CNPF (+10.38%) and MONDE (+7.07%). Meanwhile, the bottom three performers include: JGS (-12.59%), WLCON (-12.02%) and ALI (-10.66%). Market breadth was skewed to the negative territory with 23 declines versus 7 advances.

## Cumulative Performance (%)

YTD	6 Months	1YR	2YR	Since Inception
7.48	7.81	14.83	16.94	5.80

## NAVPU Graph

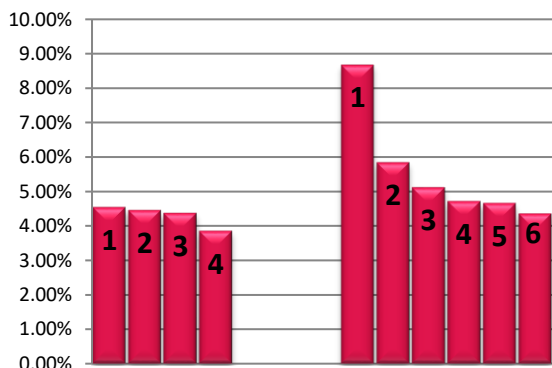


## PORTFOLIO COMPOSITION

Allocation	% of Fund
Equities	44.64
Government Securities	7.85
Corporate Bonds	44.41
Time Deposits and Money Market	3.10

## TOP 10 HOLDINGS

### Asset Allocation



### Top Equity Holdings

① SM Investments Corporation	4.54%
② Int'l. Container Terminal Services, Inc.	4.46%
③ BDO Unibank, Inc.	4.37%
④ SM Prime Holdings, Inc.	3.85%

### Top Fixed Income Holdings

① Fixed Rate Treasury Note 01/25/2034	8.68%
② Fixed Rate Treasury Note 10/20/2032	5.84%
③ Fixed Rate Treasury Note 7/19/2031	5.12%
④ Fixed Rate Treasury Note 11/24/2042	4.72%
⑤ Fixed Rate Treasury Note 08/17/2033	4.66%
⑥ Fixed Rate Treasury Note 5/23/2044	4.36%

**Risk Warning:** Past performance is not indicative of future results. Our investment management services relate to a variety of investments, each of which can fluctuate in value. The value of portfolios we manage may fall as well as rise, and the investor may not get back the full amount originally invested. The investment risks vary between different types of instruments. For example, for investments involving exposure to a currency other than that in which the portfolio is denominated, changes in the rate of exchange may cause the value of investments, and consequently the value of the portfolio, to go up or down. In the case of a higher volatility portfolio the loss on realization or cancellation may be very high (including total loss of investment), as the value of such an investment may fall suddenly and substantially. In making an investment decision, prospective investors must rely on their own examination of the merits and risks involved. **Disclaimer:** Unless otherwise noted, all information contained herein is sourced from BPI AIA\* internal data. The content included herein has been shared with various in-house departments within BPI AIA\*, in the ordinary course of completion. BPI AIA\* complies with the confidentiality requirements of their respective jurisdictions. Parts of this presentation may be based on information received from sources we consider reliable. We do not represent that all of this information is accurate or complete, however, and it may not be relied upon as such.