

# FUND FACT SHEET

All data as of June 30, 2025 unless otherwise stated

## Fund Objective and Strategy

The Fund aims to achieve long-term capital and income growth by investing in a diversified portfolio of fixed income and equity securities. The Fund aims to outperform its benchmark, which is composed of 50% BPI Philippine Government Bond Index and 50% Philippine Stock Exchange Index.

## Fund Details

Fund Manager	BPI WEALTH – A Trust Corporation
Inception Date	June 15, 2017
Fund Classification	Balanced Fund
Fund Size	PHP 49.58 Million
Fund Currency	Philippine Peso
No. of Holdings	35
Fund Management Fee	1.75% per annum

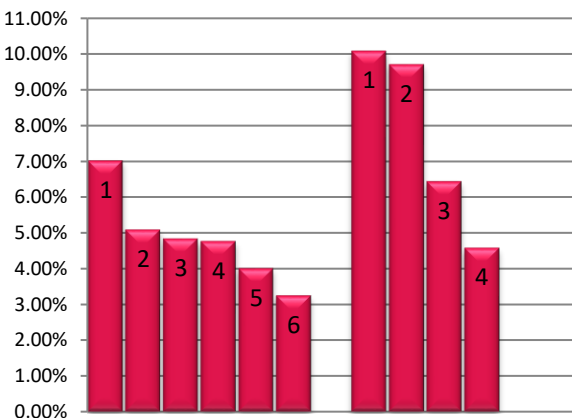
## Highest and Lowest Unit Price Achieved

Initial (15 June 2017)	1.0000
Highest (8 October 2024)	1.0900
Lowest (24 March 2020)	0.8083
NAVPU – 30 June 2025	1.0257

## Risk Classification

The Fund is suitable for investors with an aggressive profile or for those who take long-term views. As a marked-to-market UITF, the Fund's net asset value and total return may fall as well as rise as a result of stock prices and interest rates movements. On redemption of units, an investor may receive an amount less than the original amount of investment. Prior to investment in the Fund, the investor shall undergo a client suitability assessment procedure to determine whether the Fund is appropriate for him considering his investment objective, risk tolerance, preferences and experience.

## TOP HOLDINGS Asset Allocation



**Risk Warning:** Past performance is not indicative of future results. Our investment management services relate to a variety of investments, each of which can fluctuate in value. The value of portfolios we manage may fall as well as rise, and the investor may not get back the full amount originally invested. The investment risks vary between different types of instruments. For example, for investments involving exposure to a currency other than that in which the portfolio is denominated, changes in the rate of exchange may cause the value of investments, and consequently the value of the portfolio, to go up or down. In the case of a higher volatility portfolio the loss on realization or cancellation may be very high (including total loss of investment), as the value of such an investment may fall suddenly and substantially. In making an investment decision, prospective investors must rely on their own examination of the merits and risks involved. **Disclaimer:** Unless otherwise noted, all information contained herein is sourced from BPI AIA\* internal data. The content included herein has been shared with various in-house departments within BPI AIA\*, in the ordinary course of completion. BPI AIA\* complies with the confidentiality requirements of their respective jurisdictions. Parts of this presentation may be based on information received from sources we consider reliable. We do not represent that all of this information is accurate or complete, however, and it may not be relied upon as such.

## BPI-Philam Active Allocation Fund Market Commentary

In June, the Philippine bond market saw significant ups and downs. This was mainly because of a brief conflict between Israel and Iran, which caused oil prices to jump and raised concerns about inflation. The 10-year Philippine bond yield rose by as much as 16 basis points before ending the month two basis points higher. As such, the BPI Philippine Government Bond Index returned 0.28%, bringing the first half of 2025 return to 2.47%. Meanwhile, the BPI Philippine Government Bond 1-5 Year Index returned 0.35%, with first half 2025 return at 3.04%.

Aside from the Israel-Iran war, investors also weighed local and global macroeconomic developments. Philippine inflation further fell to 1.3% in May, from 1.4% in April. In addition, the Bangko Sentral ng Pilipinas cut the policy rate by 25 basis points to 5.25%. In the US, the Federal Reserve kept rates steady at 4.25%-4.50%, as policymakers await more data to better assess the impact of US import tariffs on the economy.

Looking ahead, we expect market volatility to continue due to global uncertainties, especially around US trade policies and geopolitical tensions. However, the local environment remains favorable for bond investments, thanks to low inflation, slower economic growth, dovish central bank, and fewer government bond auctions. Towards the end of June, the Bureau of the Treasury released its auction schedule for the third quarter, which showed an 11% decline in offering volume versus the initial schedule in the second quarter.

The Philippine Stock Exchange index (PSEI) traded sideways most of the month as the market digested a mix bag of macroeconomic developments. Investor optimism was evident on the release of May inflation print which turned out better than expected. This, in turn, fueled bets of another round of rate cuts by the Bangko Sentral ng Pilipinas (BSP). However, optimism soon turned into jitters on renewed geopolitical tensions in the Middle East leading to a spike in global oil prices and weakening of the Peso. Towards the latter part of the month, the market saw FTSE rebalancing where the country registered a down-weight en-route to a net foreign outflow. The PSEI rose modestly by 0.37% month-on-month to 6,364.94 in June.

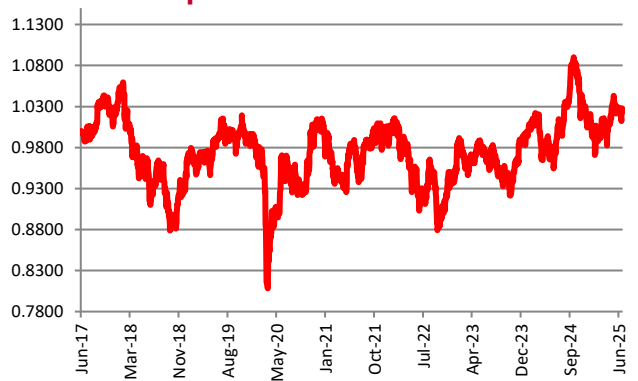
In terms of trading activity, the PSEI recorded a healthy Average Daily Turnover of Pnp6.642 billion in June. Meanwhile, foreigners remained net sellers for the third straight month at US\$72 million, partly due to FTSE rebalancing.

On a per stock basis, the top three index gainers for the month include: BLOOM (+22.25%), ALI (+17.39%) and PGOLD (+16.13%). Meanwhile, the bottom three performers were: CBC (-10.12%), BPI (-6.54%) and BDO (-5.09%).

## Cumulative Performance (%)

YTD	6 Months	1YR	2YR	Since Inception
1.32	1.32	4.87	6.05	2.57

## NAVPU Graph



## PORTFOLIO COMPOSITION

Allocation	% of Fund
Equities	33.79
Government Securities	8.91
Corporate Bonds	47.22
Time Deposits and Money Market	10.09

## Top Equity Holdings

① SM Investments Corporation	7.02%
② Int'l. Container Terminal Services, Inc.	5.09%
③ Bank of the Philippine Islands	4.84%
④ BDO Unibank, Inc.	4.77%
⑤ SM Prime Holdings, Inc.	4.01%
⑥ Manila Electric Company	3.25%

## Top Fixed Income Holdings

① Time Deposit	10.09%
② Fixed Rate Treasury Note 4/28/2035	9.72%
③ Fixed Rate Treasury Note 10/20/2032	6.44%
④ Fixed Rate Treasury Note 7/19/2031	4.58%