

FUND FACT SHEET

All data as of April 30, 2026 unless otherwise stated

Fund Objective and Strategy

The Fund aims to achieve long-term capital and income growth by investing in a diversified portfolio of fixed income and equity securities. The Fund aims to outperform its benchmark, which is composed of 50% BPI Philippine Government Bond Index and 50% Philippine Stock Exchange Index.

Fund Details

Fund Manager	BPI WEALTH – A Trust Corporation
Inception Date	June 15, 2017
Fund Classification	Balanced Fund
Fund Size	PHP 42.45 Million
Fund Currency	Philippine Peso
No. of Holdings	36
Fund Management Fee	1.75% per annum

Highest and Lowest Unit Price Achieved

Initial (15 June 2017)	1.0000
Highest (8 October 2024)	1.0900
Lowest (24 March 2020)	0.8083
NAVPU –30 April 2026	0.9856

Risk Classification

The Fund is suitable for investors with an aggressive profile or for those who take long-term views. As a marked-to-market UITF, the Fund's net asset value and total return may fall as well as rise as a result of stock prices and interest rates movements. On redemption of units, an investor may receive an amount less than the original amount of investment. Prior to investment in the Fund, the investor shall undergo a client suitability assessment procedure to determine whether the Fund is appropriate for him considering his investment objective, risk tolerance, preferences and experience.

BPI-Philam Active Allocation Fund Market Commentary

Philippine government bond prices initially recovered in April following the sharp selloff in March. However, gains were later reversed, with yields ending the month broadly unchanged.

The early decline in yields was driven by improving global sentiment, particularly after reports of a ceasefire between the US and Iran, which led to a sharp drop in oil prices. Brent crude fell from around \$118 per barrel to as low as \$90. However, this improvement proved temporary as negotiations stalled, causing oil prices to rebound and weigh on market sentiment.

Locally, bond yields were pressured higher following further monetary tightening by the Bangko Sentral ng Pilipinas (BSP). The policy rate was raised from 4.25% to 4.50%, alongside upward revisions to inflation forecasts. The BSP also signaled the possibility of additional rate hikes, contributing to the bond selloff late in the month.

During the period, the Bureau of the Treasury raised PHP 115 billion through regular bond auctions, below its PHP 120–140 billion target. This was due to the government choosing to accept fewer bids as bond yields continued to rise.

The Philippine Stock Exchange Index (PSEI) declined as continued Middle East tensions—particularly the conflict involving the US and Israel against Iran—persisted in weighing on investor sentiment. The prolonged conflict continued to have spillover effects on the global economy, most notably through elevated oil prices.

On the domestic front, March inflation accelerated to 4.1%, breaching the Bangko Sentral ng Pilipinas' (BSP) 2–4% target range and prompting a swift policy response. The BSP raised policy rates by 25 basis points and upgraded its inflation forecasts for 2026. Meanwhile, the Philippine peso came under renewed pressure, breaching the P61-per-dollar level during the month.

Against this backdrop, the PSEI ended April at 5,833.64, representing a 1.9% month-on-month decline.

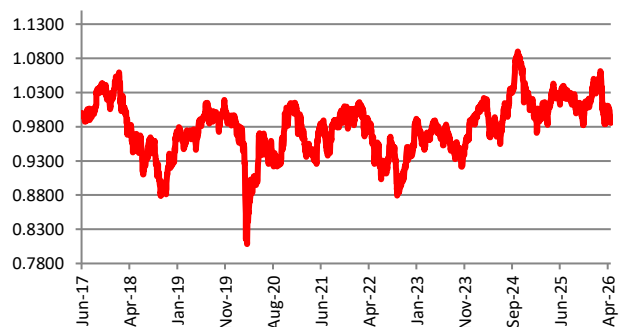
Market activity remained subdued, with Average Daily Value Turnover declining to Pnp6,055 billion, down 6.52% from the previous month. Foreign investors likewise remained net sellers, registering US\$211 million in net outflows for the month, further dampening market sentiment.

On a per stock basis, the top three index gainers for the month include: MER (+5.59%), MBT (+5.51%) and PGOLD (+4.63%). Meanwhile, the bottom three performers were: CNPF (-18.57%), PLUS (-15.02%) and JFC (-10.52%).

Cumulative Performance (%)

YTD	6 Months	1YR	2YR	Since Inception
-3.05	-1.72	-3.89	0.43	-1.44

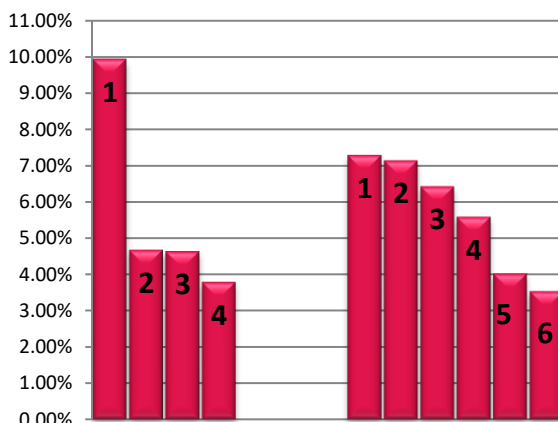
NAVPU Graph



PORTFOLIO COMPOSITION

Allocation	% of Fund
Government	42.06
Corporates	10.63
Equities	46.14
Cash	1.17

TOP HOLDINGS Asset Allocation



Top Equity Holdings

① Int'l. Container Terminal Services, Inc.	9.94%
② SM Investments Corporation	4.67%
③ Manila Electric Company	4.64%
④ BDO Unibank, Inc.	3.79%

Top Fixed Income Holdings

① Fixed Rate Treasury Note 10/20/2032	7.29%
② Fixed Rate Treasury Note 04/28/2035	7.14%
③ Fixed Rate Treasury Note 7/19/2031	6.42%
④ Fixed Rate Treasury Note 02/23/2036	5.58%
⑤ Fixed Rate Treasury Note 05/23/2044	4.02%
⑥ Fixed Rate Treasury Note 08/17/2033	3.53%

Risk Warning: Past performance is not indicative of future results. Our investment management services relate to a variety of investments, each of which can fluctuate in value. The value of portfolios we manage may fall as well as rise, and the investor may not get back the full amount originally invested. The investment risks vary between different types of instruments. For example, for investments involving exposure to a currency other than that in which the portfolio is denominated, changes in the rate of exchange may cause the value of investments, and consequently the value of the portfolio, to go up or down. In the case of a higher volatility portfolio the loss on realization or cancellation may be very high (including total loss of investment), as the value of such an investment may fall suddenly and substantially. In making an investment decision, prospective investors must rely on their own examination of the merits and risks involved. **Disclaimer:** Unless otherwise noted, all information contained herein is sourced from BPI AIA* internal data. The content included herein has been shared with various in-house departments within BPI AIA*, in the ordinary course of completion. BPI AIA* complies with the confidentiality requirements of their respective jurisdictions. Parts of this presentation may be based on information received from sources we consider reliable. We do not represent that all of this information is accurate or complete, however, and it may not be relied upon as such.