

FUND FACT SHEET

All data as of February 27, 2026 unless otherwise stated

Fund Objective and Strategy

The Fund aims to achieve long-term capital and income growth by investing in a diversified portfolio of fixed income and equity securities. The Fund aims to outperform its benchmark, which is composed of 50% BPI Philippine Government Bond Index and 50% Philippine Stock Exchange Index.

Fund Details

Fund Manager	BPI WEALTH – A Trust Corporation
Inception Date	June 15, 2017
Fund Classification	Balanced Fund
Fund Size	PHP 45.71 Million
Fund Currency	Philippine Peso
No. of Holdings	34
Fund Management Fee	1.75% per annum

Highest and Lowest Unit Price Achieved

Initial (15 June 2017)	1.0000
Highest (8 October 2024)	1.0900
Lowest (24 March 2020)	0.8083
NAVPU – 27 February 2026	1.0600

Risk Classification

The Fund is suitable for investors with an aggressive profile or for those who take long-term views. As a marked-to-market UITF, the Fund's net asset value and total return may fall as well as rise as a result of stock prices and interest rates movements. On redemption of units, an investor may receive an amount less than the original amount of investment. Prior to investment in the Fund, the investor shall undergo a client suitability assessment procedure to determine whether the Fund is appropriate for him considering his investment objective, risk tolerance, preferences and experience.

BPI-Philam Active Allocation Fund Market Commentary

Philippine government bond yields declined by an average of 13 basis points in February, led by bonds with maturities of less than one year, which fell by around 25 basis points. The rally in bonds was largely driven by the Bangko Sentral ng Pilipinas' (BSP) decision to cut its policy rate from 4.50% to 4.25%, citing softer-than-expected economic growth.

Investor sentiment was further supported by news reports on the potential inclusion of Philippine government bonds in the J.P. Morgan Government Bond Index – Emerging Markets (GBI-EM). National Treasurer Sharon Almanza indicated that an announcement on the country's possible inclusion could be forthcoming. Such inclusion may increase foreign investor participation in the local bond market, potentially boosting demand for government securities and exerting downward pressure on yields.

During the month, the Bureau of the Treasury (BTr) issued a new 10-year benchmark bond (FXTN 10-74), raising a total of Pnp298 billion, including Pnp63 billion from bond exchange transactions. The auction attracted strong demand, with total tenders reaching Pnp328.5 billion, significantly exceeding the initial offer of Pnp30 billion. The bond was awarded at a coupon rate of 5.925%, which was below prevailing secondary market yields for comparable tenors. The strong auction outcome reinforced positive sentiment in the local fixed income market during the period.

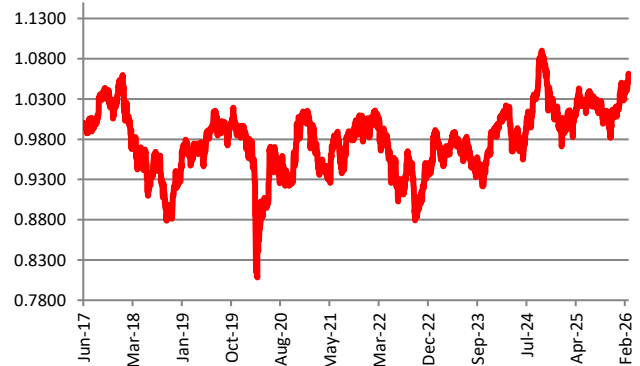
The Philippine Stock Exchange Index (PSEI) extended gains in February, rising by 4.46% month-on-month, to close at 6,611.24. The rally was driven by foreign buying at US\$143 million for the month as risk appetite improved towards Emerging Markets. Furthermore, sentiment was supported by the Bangko Sentral ng Pilipinas' (BSP) 25 bps rate cut to 4.25% as inflation moderated to 2.0% YoY in January (within the target band of 2-4%), alongside a firmer peso at Pnp57.66 or 2.03% gain month-on-month. Lastly, MSCI's quarterly review drove month-end flows which saw the inclusion of MYNLD and APX in the small cap index.

Average Daily Value Turnover reached Pnp6.47 billion, a tad lower than the prior month's Pnp6.52 billion.

On a per stock basis, the top three index gainers for the month include: PLUS (+22.71%), ACI(+18.58%) and PGOLD (+17.32%). Meanwhile, the bottom three performers were: SMC (-15.11%), SCC (-11.95%) and DMC (-10.65%).

Cumulative Performance (%)				
YTD	6 Months	1YR	2YR	Since Inception
4.27	4.08	6.93	4.39	6.00

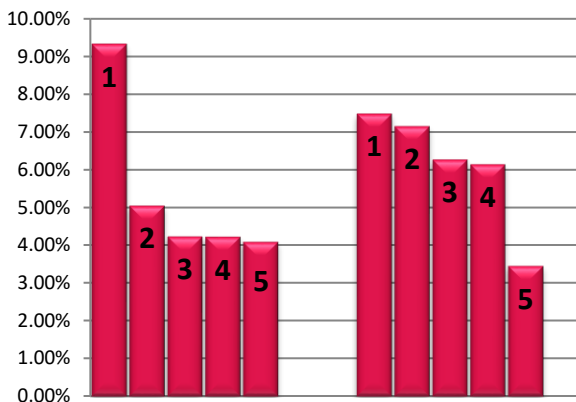
NAVPU Graph



PORTFOLIO COMPOSITION

Allocation	% of Fund
Government	40.73
Corporates	9.89
Equities	48.85
Cash	0.53

TOP HOLDINGS Asset Allocation



Top Equity Holdings

① Int'l. Container Terminal Services, Inc.	9.33%
② SM Investments Corporation	5.05%
③ BDO Unibank, Inc.	4.23%
④ Manila Electric Company	4.22%
⑤ Bank of the Philippine Islands	4.09%

Top Fixed Income Holdings

① Fixed Rate Treasury Note 04/28/2035	7.48%
② Fixed Rate Treasury Note 10/20/2032	7.15%
③ Fixed Rate Treasury Note 7/19/2031	6.27%
④ Fixed Rate Treasury Note 05/23/2044	6.14%
⑤ Fixed Rate Treasury Note 08/17/2033	3.45%

Risk Warning: Past performance is not indicative of future results. Our investment management services relate to a variety of investments, each of which can fluctuate in value. The value of portfolios we manage may fall as well as rise, and the investor may not get back the full amount originally invested. The investment risks vary between different types of instruments. For example, for investments involving exposure to a currency other than that in which the portfolio is denominated, changes in the rate of exchange may cause the value of investments, and consequently the value of the portfolio, to go up or down. In the case of a higher volatility portfolio the loss on realization or cancellation may be very high (including total loss of investment), as the value of such an investment may fall suddenly and substantially. In making an investment decision, prospective investors must rely on their own examination of the merits and risks involved. **Disclaimer:** Unless otherwise noted, all information contained herein is sourced from BPI AIA* internal data. The content included herein has been shared with various in-house departments within BPI AIA*, in the ordinary course of completion. BPI AIA* complies with the confidentiality requirements of their respective jurisdictions. Parts of this presentation may be based on information received from sources we consider reliable. We do not represent that all of this information is accurate or complete, however, and it may not be relied upon as such.