



FUND FACT SHEET

All data as of June 28, 2024 unless otherwise stated

Fund Objective and Strategy

The Fund aims to achieve long-term capital growth by investing in a diversified portfolio of equity and fixed income securities. The Fund aims to provide excess return over the composite benchmark, 50% Philippine Stock Exchange index (PSEi) and 50% return of the BPI Philippine Government Bond 1-5 Year Index, net of tax.

Fund Details

Fund Manager	BPI WEALTH – A Trust Corporation
Inception Date	March 12, 2015
Fund Classification	Balanced Fund
Fund Size	PHP3,053.93 Million
Fund Currency	Philippine Peso
No. of Holdings	54
Fund Management Fee	1.50% per annum

Highest and Lowest Unit Price Achieved

Initial (12 March 2015)	1.0000
Highest (30 January 2018)	1.0793
Lowest (17 March 2020)	0.8382
NAVPU – 28 June 2024	0.9627

Risk Classification

The Fund is suitable for investors with an aggressive profile or for those who take long-term views. As a marked-to-market UITF, the Fund's net asset value and total return may fall as well as rise as a result of stock prices and interest rates movements. On redemption of units, an investor may receive an amount less than the original amount of investment. Prior to investment in the Fund, the investor shall undergo a client suitability assessment procedure to determine whether the Fund is appropriate for him considering his investment objective, risk tolerance, preferences and experience.

BPI-Philam Balanced Fund Market Commentary

The BPI Government Bond Index rose 0.68% in June as the local yield curve fell by 6 basis points (bps) on average. Average daily trading volume for the month amounted to Php20.86 billion, lower than May's Php23.86 billion with trades mostly seen on the belly of the curve.

The Bureau of the Treasury (BT) held four FXTN auctions in June. The 7-year FXTN 20-17 and 20-year FXTN 20-27 re-issuances were fully awarded at average yields of 6.624% and 6.860%, respectively. Meanwhile, the 10-year FXTN 10-72 and 15-year FXTN 20-23 re-issuances, were partially awarded at average yields of 6.754% and 6.781%, respectively. The Bureau of Treasury (BT) announced its borrowing program for the third quarter of 2024, with weekly Treasury bill offers increased to PHP 20 billion. The BT plans to issue more tenors for the quarter, offering PHP 30 billion each for the 3-, 5-, 7-, and 10-year papers while the 14- and 20-year Treasury bond offers were reduced to PHP 25 billion.

In the local space, May headline inflation accelerated for the fourth straight month by 3.9% year-on-year from the previous month's 3.8%. The main drivers of inflation included housing, water, electricity, and gas while rice prices saw a deceleration from the previous figure of 23.9% to 23%. In an effort to curb elevated rice prices, the National Economic Development Authority (NEDA) Board approved the new Comprehensive tariff program which reduces tariff rates for rice imports alongside other essential commodities effective until 2028. The Bangko Sentral ng Pilipinas (BSP) held its policy rate steady at 6.5% during their Monetary Board meeting in June. Despite the weakening Peso, BSP Governor Eli Remolona had dovish remarks on the possibility of an August rate cut, which is ahead of the market expectations of the Federal Reserve to begin easing in September. The BSP revised both its 2024 and 2025 inflation forecast to 3.1% from 3.8% and 3.7%, respectively.

The Philippine Stock Exchange Index (PSEi) went narrowly down for the month of June. Market sentiment was weak due to the depreciation of the Philippine Peso when it hovered near the Php59 level. In addition, the FTSE rebalancing related activity further pulled the local bourse to the year-low of 6,158.58. However, the market bounced towards the latter part of the month on bargain hunting as investors digested BSP Governor's dovish rhetoric and lower inflation outlook. The PSEi closed at 6,411.91 or 0.3% lower month-on-month in June.

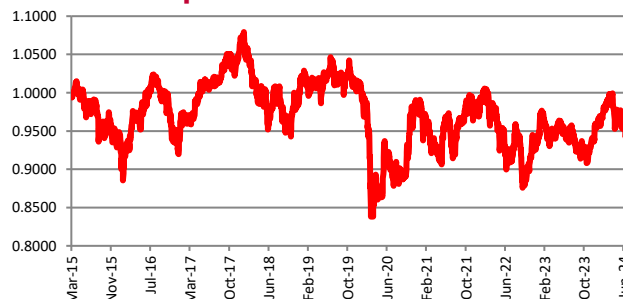
Trading activity was subdued for the month. Average Daily Turnover only recorded at Php4.4 billion. Meanwhile, foreign activity continued to register net outflows at US\$104 million for June. Index proxies SM and AC both recorded the biggest outflow as market sentiment remained weak. Foreign participation improved from 46% to 48% for the month.

On a per name basis, the top three index gainers for the month were: AEV(+10.70%), MBT (+8.86%) and ALI (+8.57%). Meanwhile, the bottom three performers include: MONDE (-16.07%), JGS (-15.97%) and CNPF (-14.27%).

Cumulative Performance (%)

YTD	6 Months	1YR	2YR	Since Inception
0.89	0.89	1.94	6.07	-3.73

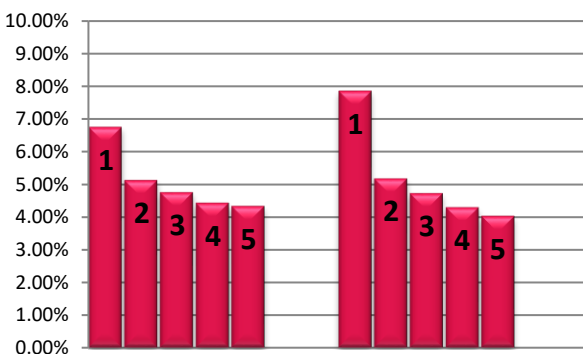
NAVPU Graph



PORTFOLIO COMPOSITION

Allocation	% of Fund
Equities	49.81
Cash	0.34
Corporates	6.07
Time Deposits and Money Market	2.52
Government	40.91
Other Receivables - Net of Liabilities	0.35

TOP HOLDINGS Asset Allocation



Top Equity Holdings

① SM Investments Corporation	6.75%
② Int'l. Container Terminal Services, Inc.	5.12%
③ Bank of the Philippine Islands	4.75%
④ SM Prime Holdings, Inc.	4.43%
⑤ BDO Unibank, Inc.	4.33%

Top Fixed Income Holdings

① Retail Treasury Bond 3/7/2028	7.86%
② Fixed Rate Treasury Note 2/14/2026	5.17%
③ Retail Treasury Bond 2/28/2029	4.72%
④ Fixed Rate Treasury Note 10/13/2029	4.29%
⑤ Retail Treasury Bond 8/22/2028	4.03%

Risk Warning: Past performance is not indicative of future results. Our investment management services relate to a variety of investments, each of which can fluctuate in value. The value of portfolios we manage may fall as well as rise, and the investor may not get back the full amount originally invested. The investment risks vary between different types of instruments. For example, for investments involving exposure to a currency other than that in which the portfolio is denominated, changes in the rate of exchange may cause the value of investments, and consequently the value of the portfolio, to go up or down. In the case of a higher volatility portfolio the loss on realization or cancellation may be very high (including total loss of investment), as the value of such an investment may fall suddenly and substantially. In making an investment decision, prospective investors must rely on their own examination of the merits and risks involved. **Disclaimer:** Unless otherwise noted, all information contained herein is sourced from BPI AIA* internal data. The content included herein has been shared with various in-house departments within BPI AIA*, in the ordinary course of completion. BPI AIA* complies with the confidentiality requirements of their respective jurisdictions. Parts of this presentation may be based on information received from sources we consider reliable. We do not represent that all of this information is accurate or complete, however, and it may not be relied upon as such.