

# FUND FACT SHEET

All data as of August 29, 2025 unless otherwise stated

## Fund Objective and Strategy

The Fund aims to achieve long-term capital growth by investing in a diversified portfolio of equity and fixed income securities. The Fund aims to provide excess return over the composite benchmark, 50% Philippine Stock Exchange Total Return index (PSEi TRI) and 50% return of the BPI Philippine Government Bond 1-5 Year Index.

## Fund Details

Fund Manager	BPI WEALTH – A Trust Corporation
Inception Date	March 12, 2015
Fund Classification	Balanced Fund
Fund Size	PHP 3,029.22 Million
Fund Currency	Philippine Peso
No. of Holdings	52
Fund Management Fee	1.50% per annum

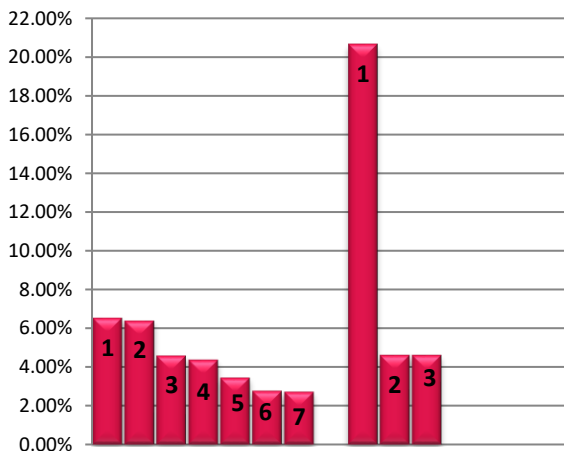
## Highest and Lowest Unit Price Achieved

Initial (12 March 2015)	1.0000
Highest (30 January 2018)	1.0793
Lowest (17 March 2020)	0.8382
NAVPU –29 August 2025	1.0039

## Risk Classification

The Fund is suitable for investors with an aggressive profile or for those who take long-term views. As a marked-to-market UITF, the Fund's net asset value and total return may fall as well as rise as a result of stock prices and interest rates movements. On redemption of units, an investor may receive an amount less than the original amount of investment. Prior to investment in the Fund, the investor shall undergo a client suitability assessment procedure to determine whether the Fund is appropriate for him considering his investment objective, risk tolerance, preferences and experience.

## TOP HOLDINGS Asset Allocation



**Risk Warning:** Past performance is not indicative of future results. Our investment management services relate to a variety of investments, each of which can fluctuate in value. The value of portfolios we manage may fall as well as rise, and the investor may not get back the full amount originally invested. The investment risks vary between different types of instruments. For example, for investments involving exposure to a currency other than that in which the portfolio is denominated, changes in the rate of exchange may cause the value of investments, and consequently the value of the portfolio, to go up or down. In the case of a higher volatility portfolio the loss on realization or cancellation may be very high (including total loss of investment), as the value of such an investment may fall suddenly and substantially. In making an investment decision, prospective investors must rely on their own examination of the merits and risks involved. **Disclaimer:** Unless otherwise noted, all information contained herein is sourced from BPI AIA\* internal data. The content included herein has been shared with various in-house departments within BPI AIA\*, in the ordinary course of completion. BPI AIA\* complies with the confidentiality requirements of their respective jurisdictions. Parts of this presentation may be based on information received from sources we consider reliable. We do not represent that all of this information is accurate or complete, however, and it may not be relied upon as such.

## BPI-Philam Balanced Fund Market Commentary

In August, the Philippine fixed income market showed mixed performance across tenors, reflecting cautious investor sentiment amid global and domestic developments. The Retail Treasury Bonds Tranche 31 (RTB-31), a five-year peso-denominated bond, was also launched, priced at a final coupon of 6.00% per annum. The offering attracted strong investor interest, raising PHP210 billion from PHP354.18 billion in tenders on the first day of the offer period. For this issuance, the government raised a total of PHP507 billion. Philippine inflation eased to 0.9% in July, well below the target range of 2-4%, further supporting bond market stability. As a result, the Bangko Sentral ng Pilipinas reduced its policy rate by 25 bps to 5.00%, marking a continuation of its easing cycle. BSP Governor Eli Remolona described it as a "Goldilocks rate", designed to stimulate economic activity while keeping inflation in check. Performance across BPI's domestic fixed income indices reflected this easing bias. The BPI GS Overall Index returned 1.08%, led by the BPI GS 5+ Index, which gained 1.54%. Shorter-duration indices posted more modest returns, with the BPI GS 1-3 Index up 0.53% and the Money Market Index rising 0.37%. Looking ahead, the outlook remains cautiously optimistic. Locally, the benign inflation environment and the BSP's recent 25 bps rate cut for overnight borrowing (and 5.50% for lending) provide further support for lower yields.

The Philippine Stock Exchange Index (PSEi) slid for the second straight month on persistent foreign selling. Investors digested quite an eventful month with key macro-economic events happening on both local and foreign fronts, along with two major rebalancing days. On the local space, the market took cues from regulatory news on e-gaming and telecommunication, a deceleration in July Inflation, underwhelming second quarter corporate earnings and a third consecutive rate cut by the Bangko Sentral ng Pilipinas (BSP). Meanwhile in the US, market sentiment was driven by the lower-than-expected US Non-farm payrolls early in the month, and the US Federal Reserve's commentary which signaled a higher chance of a rate cut in September. Furthermore, two major rebalancing events spurred activity in the equities market namely the Philippine Stock Exchange Index Semi Annual Review and MSCI Quarterly Review. For the PSEi rebalancing, PLUS, despite being hounded by regulatory issues, was added to the main index, replacing BLOOM. Meanwhile for the MSCI rebalancing, RCR and PNB got added in the small cap index while DNL got deleted. The local bourse closed at 6,155.57 or 1.55% lower month-on-month.

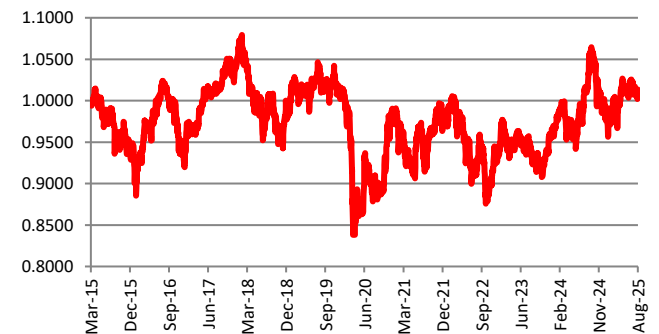
The PSEi saw an increased level of activity with Average Daily Turnover registering at Pph7.2billion in August, 9.67% month-on-month. Meanwhile, foreigners continued to be risk-averse with outflows accelerating to US\$74 million, the fifth straight month of net foreign selling. Foreign participation recorded at 46%.

On a per stock basis, the top three index gainers for the month include: GTCAP (+15.10%), JGS (+13.33%) and ALI (+12.00%). Meanwhile, the bottom three performers were: CNVRG (-21.70%), SMC (-15.16%) and TEL (-12.00%).

## Cumulative Performance (%)

YTD	6 Months	1YR	2YR	Since Inception
1.14	3.12	-0.70	8.69	0.39

## NAVPU Graph



## PORTFOLIO COMPOSITION

Allocation	% of Fund
Equities	48.71
Cash	1.41
Corporates	4.08
Time Deposits and Money Market	0.00
Government	45.38
Other Receivables - Net of Liabilities	0.42

## Top Equity Holdings

① Int'l. Container Terminal Services, Inc.	6.53%
② SM Investments Corporation	6.38%
③ BDO Unibank, Inc.	4.59%
④ Bank of the Philippine Islands	4.37%
⑤ SM Prime Holdings, Inc.	3.44%
⑥ Manila Electric Company	2.76%
⑦ Metropolitan Bank & Trust Co.	2.72%

## Top Fixed Income Holdings

① Retail Treasury Bond 8/20/2030	20.65%
② Retail Treasury Bond 2/28/2029	4.62%
③ Fixed Rate Treasury Note 10/13/2029	4.61%