



FUND FACT SHEET

All data as of May 31, 2023 unless otherwise stated

Fund Objective and Strategy

The Fund aims to achieve long-term capital growth by investing in a diversified portfolio of equity and fixed income securities. The Fund aims to provide excess return over the composite benchmark, 50% Philippine Stock Exchange index (PSEi) and 50% return of the BPI Philippine Government Bond 1-5 Year Index, net of tax.

Fund Details

Fund Manager	BPI WEALTH – A Trust Corporation
Inception Date	March 12, 2015
Fund Classification	Balanced Fund
Fund Size	PHP3,054.90 Million
Fund Currency	Philippine Peso
No. of Holdings	56
Fund Management Fee	1.50% per annum

Highest and Lowest Unit Price Achieved

Initial (12 March 2015)	1.0000
Highest (30 January 2018)	1.0793
Lowest (17 March 2020)	0.8382
NAVPU – 31 May 2023	0.9496

Risk Classification

The Fund is suitable for investors with an aggressive profile or for those who take long-term views. As a marked-to-market UITF, the Fund's net asset value and total return may fall as well as rise as a result of stock prices and interest rates movements. On redemption of units, an investor may receive an amount less than the original amount of investment. Prior to investment in the Fund, the investor shall undergo a client suitability assessment procedure to determine whether the Fund is appropriate for him considering his investment objective, risk tolerance, preferences and experience.

BPI-Philam Balanced Fund Market Commentary

The BPI Government Bond Index returned 1.54% in May as the local yield curve flattened further, dropping by 24 basis points (bps) on average. Average daily trading volume rose to PHP21.77 billion from April's PHP15.42 billion with trades mostly seen on the long-end of the curve.

The Bureau of the Treasury (BTr) held four FXTN auctions in May. The 6-year FXTN 10-64, 9-year FXTN 10-69, 13-year FXTN 13-1, and 7-year FXTN 7-69 re-issuances were all fully awarded at average yields of 5.925%, 5.732%, 5.845%, and 5.774%, respectively. Towards the end of the month, the BTr released the June auction schedule with four Treasury Bill auctions and five FXTN issuances (9-, 5-, 15-, 6-, and 9-year tenors) each with an offer size of PHP25 billion.

In the local space, April headline inflation fell further to 6.6% year-on-year, lower than market expectations of 7.0% year-on-year. The surprise decline in the April figure resulted from lower energy prices and favorable base effects driving slower food, transport, and utility inflation. The Philippine GDP grew by 6.4% year-on-year in 1st Quarter of 2023, driven by strong household consumption, a boost in capital formation, and increased government spending. During its periodic policy meeting, the Bangko Sentral ng Pilipinas (BSP) paused its tightening cycle and kept its policy rate unchanged at 6.25% as headline inflation continued in a downward trend. The central bank officials reiterated that they remained prepared to adjust policy settings as needed and lowered its inflation forecast for 2023 and 2024 to 5.5% and 2.8%, respectively.

The Philippine Stock Exchange Index (PSEi) retreated in May and this could be attributed to the following concerns: 1) Worries over potentially more rate hikes from US Federal Reserve 2) US Debt Ceiling deadlock, and 3) Uncertainties on Bangko Sentral ng Pilipinas (BSP) monetary policy stance. The weakness of the Philippine Peso against the greenback (US Dollar) after falling to a six-month low at Php56.31 and the MSCI rebalancing – where the Philippines had a general down-weight causing significant net foreign outflow, further added downward pressure to share prices. The local bourse index dropped 2.2% to below 6,500-mark at 6,477.

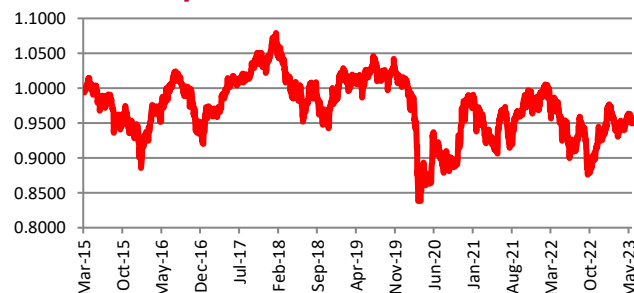
Activity for the month of May improved with Average Daily Turnover registering at Php 5.04 billion or 18.2% higher than prior period's Php4.27 billion. This was mainly driven by the MSCI rebalancing event at close of business (COB) on the last trading day of May. In terms of flows, foreigners reverted to net-selling in May at US\$81 million driven mainly by the MSCI rebalancing. Foreign participation was higher at 53% in the same period.

On stock performance in May, the top gainers are as follows: GTCAP (+7.95%), JFC (+4.71%) and SM (+3.80%). Meanwhile, here are the biggest laggards for the month: MONDE (-13.37%), ICT (-10.14%) and ICT (-7.80%).

Cumulative Performance (%)

YTD	6 Months	1YR	2YR	Since Inception
1.77	0.52	-0.22	0.98	-5.04

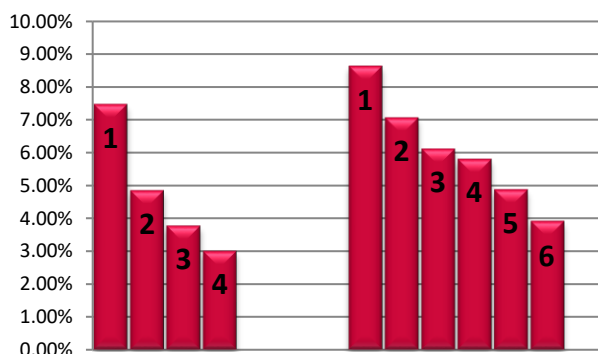
NAVPU Graph



PORTFOLIO COMPOSITION

Allocation	% of Fund
Equities	47.53
Cash	0.21
Corporates	8.68
Time Deposits and Money Market	0.66
Government	42.54
Other Receivables - Net of Liabilities	0.38

TOP HOLDINGS Asset Allocation



Top Equity Holdings

① SM Investments Corporation	7.45%
② SM Prime Holdings, Inc.	4.83%
③ BDO Unibank, Inc.	3.76%
④ Bank of the Philippine Islands	2.99%

Top Fixed Income Holdings

① Retail Treasury Bond 3/7/2028	8.61%
② Fixed Rate Treasury Note 2/14/2026	7.04%
③ Retail Treasury Bond 8/12/2025	6.10%
④ Retail Treasury Bond 3/4/2027	5.79%
⑤ Fixed Rate Treasury Note 4/8/2026	4.86%
⑥ Retail Treasury Bond 8/22/2028	3.91%

Risk Warning: Past performance is not indicative of future results. Our investment management services relate to a variety of investments, each of which can fluctuate in value. The value of portfolios we manage may fall as well as rise, and the investor may not get back the full amount originally invested. The investment risks vary between different types of instruments. For example, for investments involving exposure to a currency other than that in which the portfolio is denominated, changes in the rate of exchange may cause the value of investments, and consequently the value of the portfolio, to go up or down. In the case of a higher volatility portfolio the loss on realization or cancellation may be very high (including total loss of investment), as the value of such an investment may fall suddenly and substantially. In making an investment decision, prospective investors must rely on their own examination of the merits and risks involved. **Disclaimer:** Unless otherwise noted, all information contained herein is sourced from BPI AIA* internal data. The content included herein has been shared with various in-house departments within BPI AIA*, in the ordinary course of completion. BPI AIA* complies with the confidentiality requirements of their respective jurisdictions. Parts of this presentation may be based on information received from sources we consider reliable. We do not represent that all of this information is accurate or complete, however, and it may not be relied upon as such.