



## FUND FACT SHEET

All data as of August 30, 2024 unless otherwise stated

### Fund Objective and Strategy

The Fund aims to track the performance of the Philippine Stock Exchange Composite index (PSEi). The Fund shall substantially invest in stocks comprising the PSEi using the same weights as in the index.

### Fund Details

Fund Manager	BPI WEALTH – A Trust Corporation
Inception Date	October 25, 2011
Fund Classification	Equity Fund
Fund Size	PHP 2,609.73 Million
Fund Currency	Philippine Peso
No. of Holdings	32
Fund Management Fee	1.00% per annum

### Highest and Lowest Unit Price Achieved

Initial (25 October 2011)	1.0000
Highest (30 January 2018)	2.1502
Lowest (1 December 2011)	0.9869
NAVPU – 30 August 2024	1.7439

### Risk Classification

The Fund is suitable for investors who take medium- to long-term views. Prior to investment in the Fund, the investor shall undergo a client suitability assessment procedure to determine whether the Fund is appropriate for him considering his investment objective, risk tolerance, preferences and experience. The Fund's net asset value, and total return may fluctuate as result of stock price movements. On redemption of shares, an investor may receive an amount less than the original amount of investment. Liquidity risk also needs to be taken into account.

## BPI-Philam Equity Index Fund

### Market Commentary

The Philippine Stock Exchange Index (PSEi) rallied for the 2nd consecutive month as investors cheered the Bangko Sentral ng Pilipinas' (BSP) decision to cut policy rate by 25 basis points to 6.25%. The local bourse was further buoyed by growing optimism that US Federal Reserve's (The Fed) will likely reduce rates in September. Market sentiment was also supported by improving GDP number and peso rebound. GDP grew by 6.3% year-on-year in 2Q2024 from 5.8% in 1Q2024 propelled by government spending which rose by 10.7% while the Philippine peso strengthened to Php56.15 or 3.98% on a month-on-month basis. The PSEi moved up 4.2% month-on-month to 6,897.54.

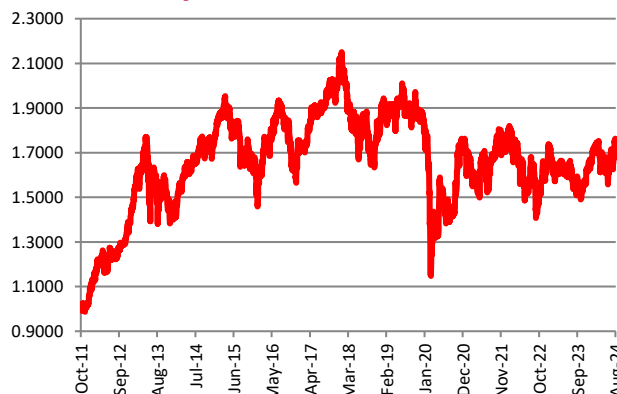
For trading activity, the market's daily value turnover improved to Php5.66 billion in August from Php4.35 billion recorded in the prior month. MSCI rebalancing which occurred at the end of the month helped spur market's turnover. In terms of foreign activity, foreign buying was sustained for another month, notching US\$143 million. Top foreign bought stocks were ALI (+US\$40 million), BDO (US\$32.6 million) and ICT (US\$17.6 million). Foreign participation rose to 56%.

On a per stock basis, the top three index gainers for the month included: CNVRG (+29.98%), ALI (+19.66%) and JFC (+12.96%). Meanwhile, the bottom three performers were: URC (-23.53%), JGS (-15.47%) and AEV (-6.35%)

### Cumulative Performance (%)

YTD	6 Months	1YR	2YR	Since Inception
8.08	0.66	13.13	8.11	74.39

### NAVPU Graph

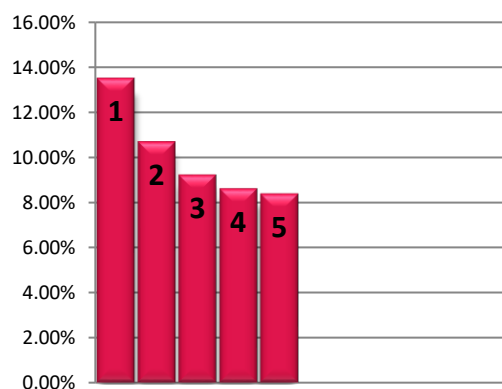


### PORTFOLIO COMPOSITION

Allocation	% of Fund
Equities	99.10
Cash & Cash Equivalents	0.90

## TOP HOLDINGS

### Asset Allocation



① SM Investments Corp.	13.51%
② Int'l. Container Terminal Services, Inc.	10.69%
③ BDO Unibank, Inc.	9.22%
④ SM Prime Holdings, Inc.	8.60%
⑤ Bank of the Philippine Islands	8.38%

**Risk Warning:** Past performance is not indicative of future results. Our investment management services relate to a variety of investments, each of which can fluctuate in value. The value of portfolios we manage may fall as well as rise, and the investor may not get back the full amount originally invested. The investment risks vary between different types of instruments. For example, for investments involving exposure to a currency other than that in which the portfolio is denominated, changes in the rate of exchange may cause the value of investments, and consequently the value of the portfolio, to go up or down. In the case of a higher volatility portfolio the loss on realization or cancellation may be very high (including total loss of investment), as the value of such an investment may fall suddenly and substantially. In making an investment decision, prospective investors must rely on their own examination of the merits and risks involved. **Disclaimer:** Unless otherwise noted, all information contained herein is sourced from BPI AIA\* internal data. The content included herein has been shared with various in-house departments within BPI AIA\*, in the ordinary course of completion. BPI AIA\* complies with the confidentiality requirements of their respective jurisdictions. Parts of this presentation may be based on information received from sources we consider reliable. We do not represent that all of this information is accurate or complete, however, and it may not be relied upon as such.