



## FUND FACT SHEET

All data as of July 31, 2024 unless otherwise stated

### Fund Objective and Strategy

The Fund aims to track the performance of the Philippine Stock Exchange Composite index (PSEi). The Fund shall substantially invest in stocks comprising the PSEi using the same weights as in the index.

### Fund Details

Fund Manager	BPI WEALTH – A Trust Corporation
Inception Date	October 25, 2011
Fund Classification	Equity Fund
Fund Size	PHP 2,561.82 Million
Fund Currency	Philippine Peso
No. of Holdings	32
Fund Management Fee	1.00% per annum

### Highest and Lowest Unit Price Achieved

Initial (25 October 2011)	1.0000
Highest (30 January 2018)	2.1502
Lowest (1 December 2011)	0.9869
NAVPU – 31 July 2024	1.6714

### Risk Classification

The Fund is suitable for investors who take medium- to long-term views. Prior to investment in the Fund, the investor shall undergo a client suitability assessment procedure to determine whether the Fund is appropriate for him considering his investment objective, risk tolerance, preferences and experience. The Fund's net asset value, and total return may fluctuate as result of stock price movements. On redemption of shares, an investor may receive an amount less than the original amount of investment. Liquidity risk also needs to be taken into account.

## BPI-Philam Equity Index Fund

### Market Commentary

The Philippine Stock Exchange Index (PSEi) surged for the month of July, posting a 3.23% month-on-month increase to close at 6,619.09. Market sentiment drastically improved on expectations of an interest-rate cut by the Bangko Sentral ng Pilipinas (BSP) on its upcoming Monetary Board Meeting in August. The Philippine inflation figure in June which eased to +3.7% or lower than +3.9% consensus forecasts, further added to the optimism. Moreover, the Philippine Peso recorded a monthly gain at +0.42% to 58.365.

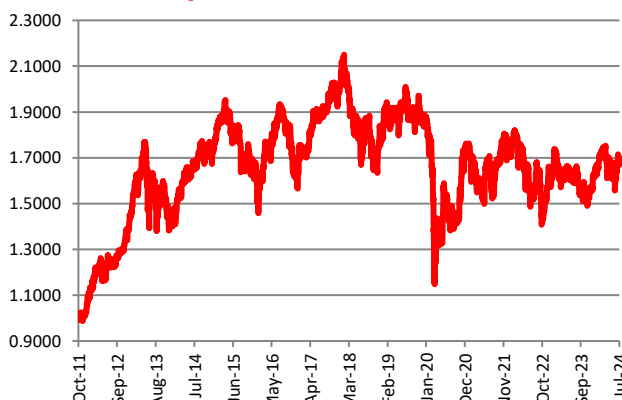
For trading activity, the PSEi saw less liquidity for the month with Average Daily Turnover recorded at Php4.35 billion or 1.2% lower than Php4.4 billion tallied in June. In terms of foreign activity, foreigners turned net buyers in July at US\$60 million. Top foreign bought names include SM (US\$25.9 million), BDO (US\$2.9 million) and BPI (US\$14.9 million). Foreign participation, likewise improved to 51%.

On a per stock basis, the top three index gainers for the month include: ACEN (+9.80%), SM (+9.33%) and PGOLD (+8.68%). Meanwhile, the bottom three performers were: BLOOM(-13.04%), NIKL (-9.70%) and AEV (-8.63%).

### Cumulative Performance (%)

YTD	6 Months	1YR	2YR	Since Inception
3.59	0.67	1.80	8.15	67.14

### NAVPU Graph

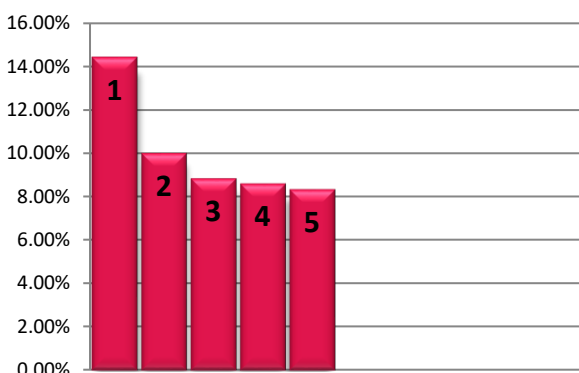


### PORTFOLIO COMPOSITION

Allocation	% of Fund
Equities	99.46
Cash & Cash Equivalents	0.54

## TOP HOLDINGS

### Asset Allocation



① SM Investments Corp.	14.41%
② Int'l. Container Terminal Services, Inc.	9.99%
③ Bank of the Philippine Islands	8.83%
④ BDO Unibank, Inc.	8.60%
⑤ SM Prime Holdings, Inc.	8.33%

**Risk Warning:** Past performance is not indicative of future results. Our investment management services relate to a variety of investments, each of which can fluctuate in value. The value of portfolios we manage may fall as well as rise, and the investor may not get back the full amount originally invested. The investment risks vary between different types of instruments. For example, for investments involving exposure to a currency other than that in which the portfolio is denominated, changes in the rate of exchange may cause the value of investments, and consequently the value of the portfolio, to go up or down. In the case of a higher volatility portfolio the loss on realization or cancellation may be very high (including total loss of investment), as the value of such an investment may fall suddenly and substantially. In making an investment decision, prospective investors must rely on their own examination of the merits and risks involved. **Disclaimer:** Unless otherwise noted, all information contained herein is sourced from BPI AIA\* internal data. The content included herein has been shared with various in-house departments within BPI AIA\*, in the ordinary course of completion. BPI AIA\* complies with the confidentiality requirements of their respective jurisdictions. Parts of this presentation may be based on information received from sources we consider reliable. We do not represent that all of this information is accurate or complete, however, and it may not be relied upon as such.