

FUND FACT SHEET

All data as of April 30, 2025 unless otherwise stated

Fund Objective and Strategy

The Fund aims to track the performance of the Philippine Stock Exchange Composite index (PSEi). The Fund shall substantially invest in stocks comprising the PSEi using the same weights as in the index.

Fund Details

Fund Manager	BPI WEALTH – A Trust Corporation
Inception Date	October 25, 2011
Fund Classification	Equity Fund
Fund Size	PHP 2,073.48 Million
Fund Currency	Philippine Peso
No. of Holdings	32
Fund Management Fee	1.00% per annum

Highest and Lowest Unit Price Achieved

Initial (25 October 2011)	1.0000
Highest (30 January 2018)	2.1502
Lowest (1 December 2011)	0.9869
NAVPU –30 April 2025	1.6392

Risk Classification

The Fund is suitable for investors who take medium- to long-term views. Prior to investment in the Fund, the investor shall undergo a client suitability assessment procedure to determine whether the Fund is appropriate for him considering his investment objective, risk tolerance, preferences and experience. The Fund's net asset value, and total return may fluctuate as result of stock price movements. On redemption of shares, an investor may receive an amount less than the original amount of investment. Liquidity risk also needs to be taken into account.

BPI-Philam Equity Index Fund Market Commentary

The Philippine Stock Exchange Index (PSEi) rose for the third month in a row despite the early sell-off that transpired following the effectivity of US President Donald Trump's tariffs on April 2 and the succeeding announcement of reciprocal tariffs. Initially, the index sank to a 52-week low in the 5,800-level but managed to bounce back after the US President decided to take a "pause" on the tariffs, which lifted sentiment and supported a relief rally. Moreover, a slew of domestic macro-economic developments further propelled the recovery, these include March inflation coming out lower-than expected at 1.8%, a 25 basis-point rate cut by the Bangko Sentral ng Pilipinas (BSP), as well as the continued appreciation of the Philippine peso. Given those, the PSEi climbed 2.82% to 6,354.99 in April.

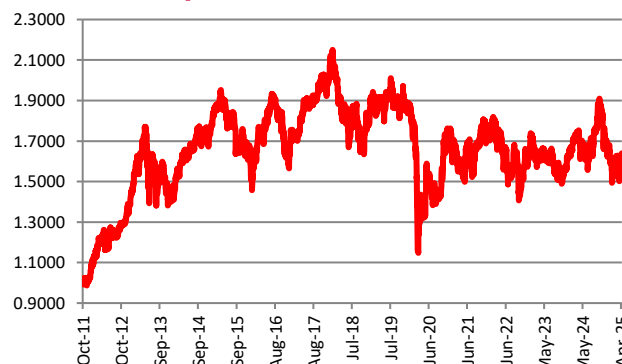
In terms of trading activity, the Average Daily Turnover grew by 3.5% to Php5.80billion in April. In terms of foreign activity, foreigners turned net sellers, registering US\$54 million amidst the tariffs pronouncements. Top foreign sold stocks were ICT (US\$50.1 million), SMPH (US\$16.2 million), and JFC (US\$11.80 million). Foreign participation remained at 55% in April.

On a per stock basis, the top three index gainers for the month include: URC (+18.21%), BLOOM (+16.78%) and PGOLD (+13.70%). Meanwhile, the bottom three performers were: GLO (-12.17%), ACEN (-12.17%) and DMC (-7.67%).

Cumulative Performance (%)

YTD	6 Months	1YR	2YR	Since Inception
-1.00	-9.23	-2.76	-0.54	63.92

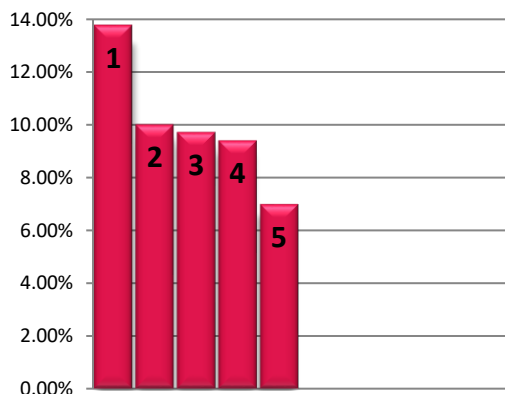
NAVPU Graph



PORTFOLIO COMPOSITION

Allocation	% of Fund
Equities	99.14
Cash & Cash Equivalents	0.86

TOP HOLDINGS Asset Allocation



① SM Investments Corp.	13.77%
② BDO Unibank, Inc.	10.00%
③ Bank of the Philippine Islands	9.71%
④ Int'l. Container Terminal Services, Inc.	9.40%
⑤ SM Prime Holdings, Inc.	6.98%