

FUND FACT SHEET

All data as of September 30, 2025 unless otherwise stated

Fund Objective and Strategy

The Fund aims to track the performance of the Philippine Stock Exchange Composite index (PSEi). The Fund shall substantially invest in stocks comprising the PSEi using the same weights as in the index.

Fund Details

Fund Manager	BPI WEALTH – A Trust Corporation
Inception Date	October 25, 2011
Fund Classification	Equity Fund
Fund Size	PHP 1,748.96 Million
Fund Currency	Philippine Peso
No. of Holdings	32
Fund Management Fee	1.00% per annum

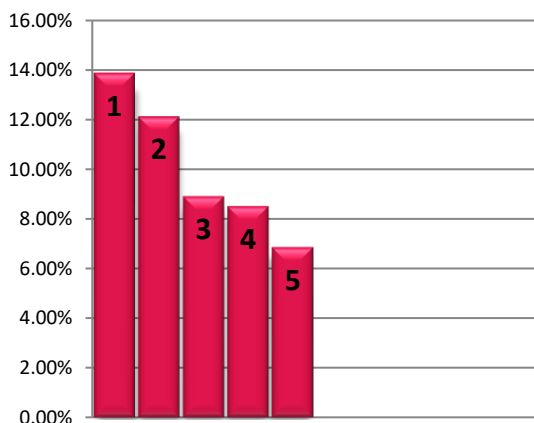
Highest and Lowest Unit Price Achieved

Initial (25 October 2011)	1.0000
Highest (30 January 2018)	2.1502
Lowest (1 December 2011)	0.9869
NAVPU –30 September 2025	1.5508

Risk Classification

The Fund is suitable for investors who take medium- to long-term views. Prior to investment in the Fund, the investor shall undergo a client suitability assessment procedure to determine whether the Fund is appropriate for him considering his investment objective, risk tolerance, preferences and experience. The Fund's net asset value, and total return may fluctuate as result of stock price movements. On redemption of shares, an investor may receive an amount less than the original amount of investment. Liquidity risk also needs to be taken into account.

TOP HOLDINGS Asset Allocation



Risk Warning: Past performance is not indicative of future results. Our investment management services relate to a variety of investments, each of which can fluctuate in value. The value of portfolios we manage may fall as well as rise, and the investor may not get back the full amount originally invested. The investment risks vary between different types of instruments. For example, for investments involving exposure to a currency other than that in which the portfolio is denominated, changes in the rate of exchange may cause the value of investments, and consequently the value of the portfolio, to go up or down. In the case of a higher volatility portfolio the loss on realization or cancellation may be very high (including total loss of investment), as the value of such an investment may fall suddenly and substantially. In making an investment decision, prospective investors must rely on their own examination of the merits and risks involved. **Disclaimer:** Unless otherwise noted, all information contained herein is sourced from BPI AIA* internal data. The content included herein has been shared with various in-house departments within BPI AIA*, in the ordinary course of completion. BPI AIA* complies with the confidentiality requirements of their respective jurisdictions. Parts of this presentation may be based on information received from sources we consider reliable. We do not represent that all of this information is accurate or complete, however, and it may not be relied upon as such.

BPI-Philam Equity Index Fund Market Commentary

The Philippine Stock Exchange Index (PSEi) fell by 3.28% month-on-month in September, breaching the 6,000 level to close at 5,953.46. The index was dragged by negative market sentiment brought about by escalating domestic political risks. Overseas, the US Federal Reserve reduced interest rates by 25 basis points as widely expected in their September 17 meeting. FTSE Rebalancing also transpired where the Philippines saw net inflow of around US\$60 million. Back to the local front, RCR had a secondary share placement last September 22 priced Php7.75 or 5% discount from previous close.

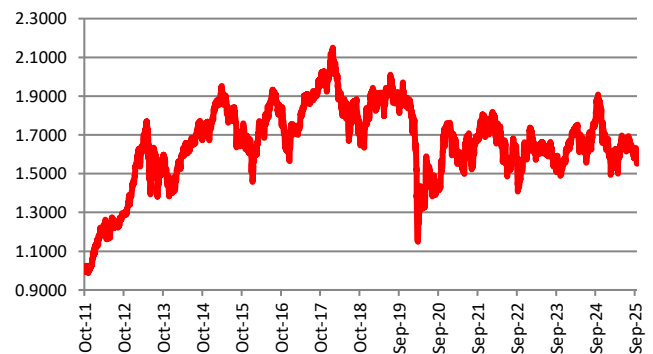
The PSEi saw its activity slowed for the month with Average Daily Turnover at Php5.71% or 20% month-on-month. Meanwhile, foreigners still remained as net sellers at US\$72 million. Foreign Participation was recorded at 50%.

On a per stock basis, the top three index gainers for the month include: PLUS (+9.78%), LTG (+8.70%) and SCC (+6.99%). Meanwhile, the bottom three performers were: GTCAP (-16.59%), ALI (-13.04%) and URC (-12.47%).

Cumulative Performance (%)

YTD	6 Months	1YR	2YR	Since Inception
-6.34	-2.61	-15.64	-1.67	55.08

NAVPU Graph



PORTFOLIO COMPOSITION

Allocation	% of Fund
Equities	99.23
Cash & Cash Equivalents	0.77

- Int'l. Container Terminal Services, Inc. 13.87%
- SM Investments Corp. 12.12%
- BDO Unibank, Inc. 8.91%
- Bank of the Philippine Islands 8.51%
- SM Prime Holdings, Inc. 6.85%