



FUND FACT SHEET

All data as of April 28, 2023 unless otherwise stated

Fund Objective and Strategy

The Fund aims to track the performance of the Philippine Stock Exchange Composite index (PSEi). The Fund shall substantially invest in stocks comprising the PSEi using the same weights as in the index.

Fund Details

Fund Manager	BPI Wealth
Inception Date	October 25, 2011
Fund Classification	Equity Fund
Fund Size	PHP 3,271.32 Million
Fund Currency	Philippine Peso
No. of Holdings	32
Fund Management Fee	1.00% per annum

Highest and Lowest Unit Price Achieved

Initial (25 October 2011)	1.0000
Highest (30 January 2018)	2.1502
Lowest (1 December 2011)	0.9869
NAVPU – 28 April 2023	1.6481

Risk Classification

The Fund is suitable for investors who take medium- to long-term views. Prior to investment in the Fund, the investor shall undergo a client suitability assessment procedure to determine whether the Fund is appropriate for him considering his investment objective, risk tolerance, preferences and experience. The Fund's net asset value, and total return may fluctuate as result of stock price movements. On redemption of shares, an investor may receive an amount less than the original amount of investment. Liquidity risk also needs to be taken into account.

BPI-Philam Equity Index Fund

Market Commentary

The Philippine Stock Exchange Index (PSEi) finally broke from a two-month decline after posting a 1.9% climb for the month of April. The rally was supported by decelerated inflation prints and a strong start of the 1st quarter earnings results. Local Philippines inflation in March registered at 7.6% or slower than 8.6% mark in February. Meanwhile, the US Consumer Price Index dropped to 5% in March, lower than 5.1% consensus estimate and 6% figure in February. Adding to the positive sentiment is the strong start of the 1Q 2023 earnings reports with banking names at the forefront as BDO and BPI posted better-than-expected results. The PSEi closed at 6,625.08 in April.

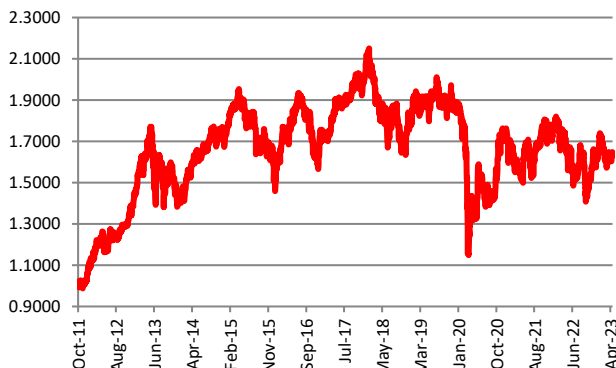
In terms of activity, the PSEi was less active in April with the Average Daily Turnover coming in only at US\$87.5 million or 33.2% lower compared from the prior month. This can be attributed to the number of non-working Holidays for the month which kept market players on the sidelines. Meanwhile, in terms of foreign flows, foreigners turned "Net Buyers", at US\$34.3 million worth of inflows. However, on a year-to-date (YTD) basis, net foreign outflows are still hefty at US\$484 million.

For the individual stock performances, the top three index gainers for the month are as follows: MPI (+20.38%), AEV (+13.12%) and BDO (+12.06%). Meanwhile, the bottom three index performers include: SCC (-16.54%), TEL (-15.21%) and DMC (14.70%).

Cumulative Performance (%)

YTD	6 Months	1YR	2YR	Since Inception
2.38	9.27	0.33	6.60	64.81

NAVPU Graph

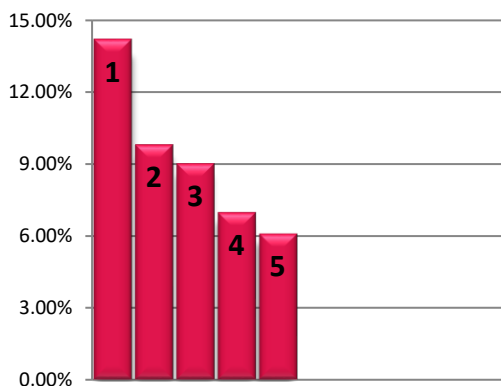


PORTFOLIO COMPOSITION

Allocation	% of Fund
Equities	99.81
Cash & Cash Equivalents	0.19

TOP HOLDINGS

Asset Allocation



① SM Investments Corp.	14.22%
② SM Prime Holdings, Inc.	9.82%
③ BDO Unibank, Inc.	9.03%
④ Bank of the Philippine Islands	6.98%
⑤ Int'l. Container Terminal Services, Inc.	6.09%

Risk Warning: Past performance is not indicative of future results. Our investment management services relate to a variety of investments, each of which can fluctuate in value. The value of portfolios we manage may fall as well as rise, and the investor may not get back the full amount originally invested. The investment risks vary between different types of instruments. For example, for investments involving exposure to a currency other than that in which the portfolio is denominated, changes in the rate of exchange may cause the value of investments, and consequently the value of the portfolio, to go up or down. In the case of a higher volatility portfolio the loss on realization or cancellation may be very high (including total loss of investment), as the value of such an investment may fall suddenly and substantially. In making an investment decision, prospective investors must rely on their own examination of the merits and risks involved. **Disclaimer:** Unless otherwise noted, all information contained herein is sourced from BPI AIA* internal data. The content included herein has been shared with various in-house departments within BPI AIA*, in the ordinary course of completion. BPI AIA* complies with the confidentiality requirements of their respective jurisdictions. Parts of this presentation may be based on information received from sources we consider reliable. We do not represent that all of this information is accurate or complete, however, and it may not be relied upon as such.