



FUND FACT SHEET

All data as of April 30, 2024 unless otherwise stated

Fund Objective and Strategy

The Fund aims to track the performance of the Philippine Stock Exchange Composite index (PSEi). The Fund shall substantially invest in stocks comprising the PSEi using the same weights as in the index.

Fund Details

Fund Manager	BPI WEALTH – A Trust Corporation
Inception Date	October 25, 2011
Fund Classification	Equity Fund
Fund Size	PHP 2,741.48 Million
Fund Currency	Philippine Peso
No. of Holdings	32
Fund Management Fee	1.00% per annum

Highest and Lowest Unit Price Achieved

Initial (25 October 2011)	1.0000
Highest (30 January 2018)	2.1502
Lowest (1 December 2011)	0.9869
NAVPU – 30 April 2024	1.6857

Risk Classification

The Fund is suitable for investors who take medium- to long-term views. Prior to investment in the Fund, the investor shall undergo a client suitability assessment procedure to determine whether the Fund is appropriate for him considering his investment objective, risk tolerance, preferences and experience. The Fund's net asset value, and total return may fluctuate as result of stock price movements. On redemption of shares, an investor may receive an amount less than the original amount of investment. Liquidity risk also needs to be taken into account.

BPI-Philam Equity Index Fund

Market Commentary

The Philippine Stock Exchange Index (PSEi) exhibited a wide swing in April. The index started off strong, reaching as high as 7,000 level to falling to as low as 6,400 mark before ultimately settling at 6,700.49 or down by 2.94% on a month-on-month basis.

Risk-off sentiment ensued on the back of the US Federal Reserve's (The Fed) hawkish tone coupled by escalating tensions over in the middle east. On the local space, the headline inflation in March rose to 3.7% from 3.4% in February primarily due to food inflation which registered at 5.6%. Moreover, investors were also wary of the Philippine Peso's depreciation, recording at 57.8 against the US Dollar at one point during the month.

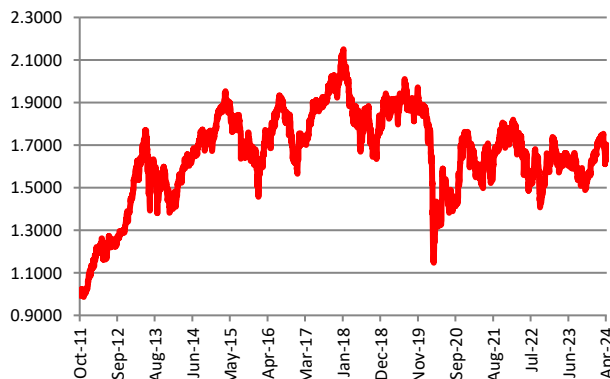
Trading activity slowed during the month, with average daily turnover at US\$116 million or 6.5% lower than US\$124 million recorded in March. Foreign selling persisted for another month at US\$412 million, the highest since September 2023. Property stocks saw the largest outflow while consumer names had some sizable sell-offs. On the other hand, banks continued to see foreign demand while conglomerates exhibited two-way flows. Foreign participation declined to 46% from 50%.

On a per name basis, the top three index gainers for the month include: BPI (+7.96%), ACEN (+7.79%) and MBT (+7.44%). Meanwhile, the bottom three performers were: SMPH (-14.53%), PGOLD (-11.57%) and ALI (-10.85%).

Cumulative Performance (%)

YTD	6 Months	1YR	2YR	Since Inception
4.47	12.96	2.28	2.62	68.57

NAVPU Graph

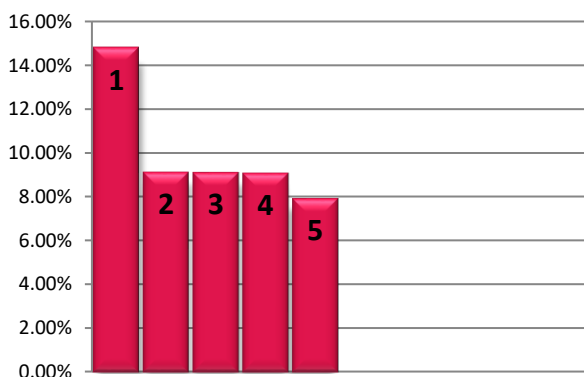


PORTFOLIO COMPOSITION

Allocation	% of Fund
Equities	99.03
Cash & Cash Equivalents	0.97

TOP HOLDINGS

Asset Allocation



① SM Investments Corp.	14.83%
② Int'l. Container Terminal Services, Inc.	9.14%
③ BDO Unibank, Inc.	9.13%
④ Bank of the Philippine Islands	9.10%
⑤ SM Prime Holdings, Inc.	7.95%

Risk Warning: Past performance is not indicative of future results. Our investment management services relate to a variety of investments, each of which can fluctuate in value. The value of portfolios we manage may fall as well as rise, and the investor may not get back the full amount originally invested. The investment risks vary between different types of instruments. For example, for investments involving exposure to a currency other than that in which the portfolio is denominated, changes in the rate of exchange may cause the value of investments, and consequently the value of the portfolio, to go up or down. In the case of a higher volatility portfolio the loss on realization or cancellation may be very high (including total loss of investment), as the value of such an investment may fall suddenly and substantially. In making an investment decision, prospective investors must rely on their own examination of the merits and risks involved. **Disclaimer:** Unless otherwise noted, all information contained herein is sourced from BPI AIA* internal data. The content included herein has been shared with various in-house departments within BPI AIA*, in the ordinary course of completion. BPI AIA* complies with the confidentiality requirements of their respective jurisdictions. Parts of this presentation may be based on information received from sources we consider reliable. We do not represent that all of this information is accurate or complete, however, and it may not be relied upon as such.