

FUND FACT SHEET

All data as of August 30, 2024 unless otherwise stated

Fund Objective and Strategy

The Fund, operating as a Fund-of-Funds, intends to achieve for its Participants long-term capital growth by investing in a diversified portfolio of global equity collective investment schemes. The Fund aims to provide excess return over the Morgan Stanley Capital International (MSCI) World Index (USD).

Fund Details

Fund Manager	BPI WEALTH – A Trust Corporation
Inception Date	March 12, 2015
Fund Classification	Global Equity Fund-of-Funds
Fund Size	USD 124.43 Million
Fund Currency	United States Dollar
No. of Holdings	12
Fund Management Fee	1.50% per annum

Highest and Lowest Unit Price Achieved

Initial (12 March 2015)	1.0000
Highest (16 July 2024)	2.0002
Lowest (12 February 2016)	0.8692
NAVPU – 30 August 2024	1.9938

Risk Classification

The Fund is suitable for investors with an aggressive profile or for those who take long-term views. As a marked-to-market UITF, the Fund's net asset value and total return may fall as well as rise as a result of stock prices and interest rates movements. On redemption of units, an investor may receive an amount less than the original amount of investment. Prior to investment in the Fund, the investor shall undergo a client suitability assessment procedure to determine whether the Fund is appropriate for him considering his investment objective, risk tolerance, preferences and experience.

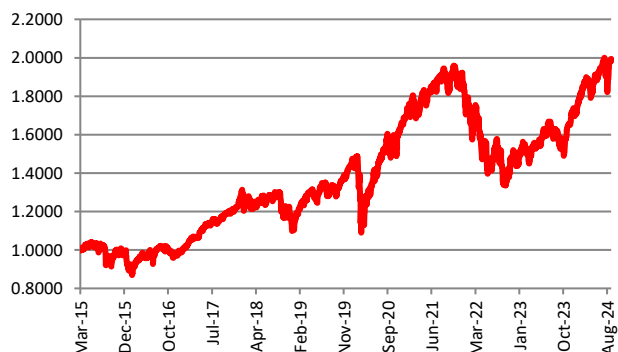
BPI-Philam Global Equity Fund Market Commentary

Global equities posted positive returns in August with the MSCI All Country World Index returning 2.6%. In the US, the S&P 500 declined as much as 7.0% at the beginning of the month amid a massive unwinding of the Yen carry trade and weak labor data as July non-farm payrolls disappointed, posting at 114,000 versus expected 175,000 jobs, and unemployment rate rose to 4.3%. Later in the month, more reassuring data helped the market rebound as retail sales rose above expectations, and the S&P 500 ended the month up by 2.4%. In terms of monetary policy, Federal Reserve Chair Jerome Powell signaled in the Jackson Hole meeting that a rate cut in September will be likely as inflation has continued to trend down to the central bank's 2.0% target. Outside of the US, the MSCI Europe Index returned 1.5%. Annual inflation fell from 2.9% in June to 2.1% in July, increasing the likelihood of another rate cut during the European Central Bank's September meeting. The Eurozone Composite and Services PMI remained in expansionary territory after the 2024 Olympic Games boosted business activity. Japanese equities experienced volatility in August after a sharp appreciation of the Yen versus the dollar triggered the unwinding of the Yen carry trade. This led to the largest decline of the Japanese equities market in 37 years before rebounding, with the TOPIX ending the month at -2.9%. The Japanese economy continues to grow supported by domestic demand as GDP growth grew by 0.8% in the second quarter. Emerging market equities posted positive returns with the MSCI Emerging Market Index returning 1.6% for the month as the US dollar weakened from Federal Reserve Chair Powell's dovish sentiment.

Cumulative Performance (%)

YTD	6 Months	1YR	2YR	Since Inception
14.91	8.21	22.58	35.99	99.38

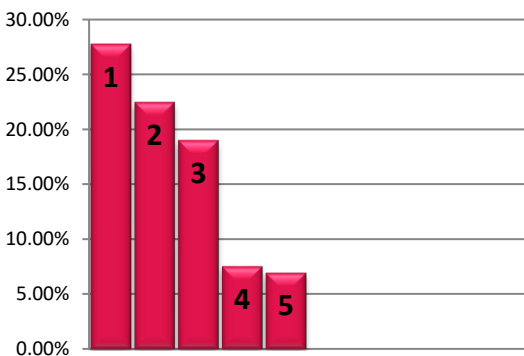
NAVPU Graph



PORTFOLIO COMPOSITION

Allocation	% of Fund
Equity Funds	99.59
Cash and Equivalents	0.97
Other Receivables - Net of Liabilities	-0.56

TOP HOLDINGS Asset Allocation



① Wellington Global Quality Growth Fund	27.75%
② JPMorgan Global Select Equity Fund	22.48%
③ SPDR S&P 500 ETF	19.01%
④ Capital Group New Perspective Fund	7.55%
⑤ Wellington Global Innovation Fund	6.95%

Risk Warning: Past performance is not indicative of future results. Our investment management services relate to a variety of investments, each of which can fluctuate in value. The value of portfolios we manage may fall as well as rise, and the investor may not get back the full amount originally invested. The investment risks vary between different types of instruments. For example, for investments involving exposure to a currency other than that in which the portfolio is denominated, changes in the rate of exchange may cause the value of investments, and consequently the value of the portfolio, to go up or down. In the case of a higher volatility portfolio the loss on realization or cancellation may be very high (including total loss of investment), as the value of such an investment may fall suddenly and substantially. In making an investment decision, prospective investors must rely on their own examination of the merits and risks involved. **Disclaimer:** Unless otherwise noted, all information contained herein is sourced from BPI AIA* internal data. The content included herein has been shared with various in-house departments within BPI AIA*, in the ordinary course of completion. BPI AIA* complies with the confidentiality requirements of their respective jurisdictions. Parts of this presentation may be based on information received from sources we consider reliable. We do not represent that all of this information is accurate or complete, however, and it may not be relied upon as such.