

# FUND FACT SHEET

All data as of February 27, 2026 unless otherwise stated

## Fund Objective and Strategy

The Fund, operating as a Fund-of-Funds, intends to achieve for its Participants long-term capital growth by investing in a diversified portfolio of global equity collective investment schemes. The Fund aims to provide excess return over the Morgan Stanley Capital International (MSCI) World Index (USD).

## Fund Details

Fund Manager	BPI WEALTH – A Trust Corporation
Inception Date	March 12, 2015
Fund Classification	Global Equity Fund-of-Funds
Fund Size	USD 136.80 Million
Fund Currency	United States Dollar
No. of Holdings	12
Fund Management Fee	1.50% per annum

## Highest and Lowest Unit Price Achieved

Initial (12 March 2015)	1.0000
Highest (25 February 2026)	2.4379
Lowest (12 February 2016)	0.8692
NAVPU – 27 February 2026	2.4190

## Risk Classification

The Fund is suitable for investors with an aggressive profile or for those who take long-term views. As a marked-to-market UITF, the Fund's net asset value and total return may fall as well as rise as a result of stock prices and interest rates movements. On redemption of units, an investor may receive an amount less than the original amount of investment. Prior to investment in the Fund, the investor shall undergo a client suitability assessment procedure to determine whether the Fund is appropriate for him considering his investment objective, risk tolerance, preferences and experience.

## BPI-Philam Global Equity Fund Market Commentary

Global equities were mixed in February. The MSCI ACWI rose by just under 1% while the Nasdaq 100 fell -3.9% and the S&P 500 dipped by -1.4%. The relatively muted range of the S&P 500 for most of the month gave way to heightened volatility as the month closed following a breakout of tensions in the Middle East. February closed with mixed sector dynamics. Utilities led sector returns with a 10.4% monthly gain followed by Energy up 9.5% and Materials up 8.4%. As risk premia rose, Consumer Staples fared well too, rising 7.8% for the month and Health Care followed suit, up 3.5%. The worst performing sector was Financials, which tumbled -3.8% and Technology also struggled, down -3.6% for the month.

The U.S.-Iran conflict muddled the Federal Reserve's interest-rate path, with rising oil prices and inflation uncertainty prompting policymakers to reconsider the pace and direction of future rate moves. Some officials suggest that rate cuts may be delayed or even reversed if inflationary pressures persist.

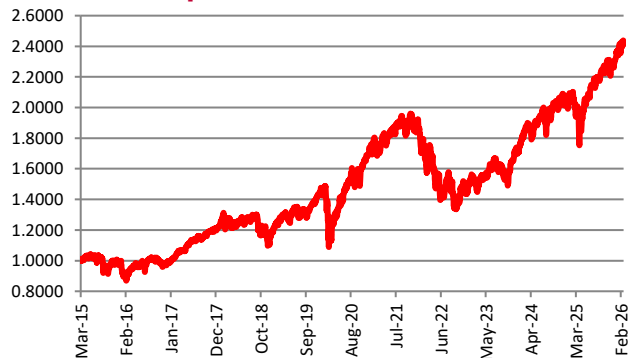
Corporate earnings growth remains uneven in early 2026, with technology and communication services continuing to drive a disproportionate share of overall gains, while many smaller companies are exhibiting more modest momentum. That said, broader forecasts still indicate positive earnings growth across all sectors for the full year.

In February, the EURO STOXX 50 index reached a 52-week high of 6,173 near the end of the month. After a strong February, concerns in the Middle East also weighed on European share price by month-end. Asia-Pacific equities generally rose throughout February, extending a strong start to the year driven by sustained investor appetite, particularly in technology, semiconductors, and AI-linked stocks. The Nikkei 225 trended higher most of the month, hitting multi-year record levels while South Korea's KOSPI had an extremely strong February, breaking above 6,000.

## Cumulative Performance (%)

YTD	6 Months	1YR	2YR	Since Inception
4.36	10.41	18.82	31.28	141.90

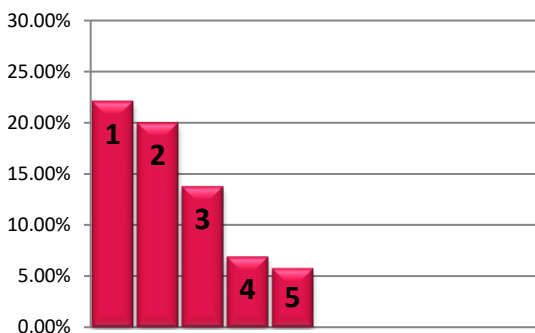
## NAVPU Graph



## PORTFOLIO COMPOSITION

Allocation	% of Fund
Equity Funds	92.87
Cash and Equivalents	6.97
Other Receivables - Net of Liabilities	0.17

## TOP HOLDINGS Asset Allocation



① Wellington Global Quality Growth Fund	22.09%
② JPMorgan Global Select Equity Fund	20.01%
③ SPDR S&P 500 ETF	13.76%
④ Standard Chartered Bank Dollar Time Deposit	6.92%
⑤ Wellington Asia Technology Fund	5.80%

**Risk Warning:** Past performance is not indicative of future results. Our investment management services relate to a variety of investments, each of which can fluctuate in value. The value of portfolios we manage may fall as well as rise, and the investor may not get back the full amount originally invested. The investment risks vary between different types of instruments. For example, for investments involving exposure to a currency other than that in which the portfolio is denominated, changes in the rate of exchange may cause the value of investments, and consequently the value of the portfolio, to go up or down. In the case of a higher volatility portfolio the loss on realization or cancellation may be very high (including total loss of investment), as the value of such an investment may fall suddenly and substantially. In making an investment decision, prospective investors must rely on their own examination of the merits and risks involved. **Disclaimer:** Unless otherwise noted, all information contained herein is sourced from BPI AIA\* internal data. The content included herein has been shared with various in-house departments within BPI AIA\*, in the ordinary course of completion. BPI AIA\* complies with the confidentiality requirements of their respective jurisdictions. Parts of this presentation may be based on information received from sources we consider reliable. We do not represent that all of this information is accurate or complete, however, and it may not be relied upon as such.