

FUND FACT SHEET

All data as of March 31, 2026 unless otherwise stated

Fund Objective and Strategy

The Fund, operating as a Fund-of-Funds, intends to achieve for its Participants long-term capital growth by investing in a diversified portfolio of global equity collective investment schemes. The Fund aims to provide excess return over the Morgan Stanley Capital International (MSCI) World Index (USD).

Fund Details

Fund Manager	BPI WEALTH – A Trust Corporation
Inception Date	March 12, 2015
Fund Classification	Global Equity Fund-of-Funds
Fund Size	USD 125.67 Million
Fund Currency	United States Dollar
No. of Holdings	11
Fund Management Fee	1.50% per annum

Highest and Lowest Unit Price Achieved

Initial (12 March 2015)	1.0000
Highest (25 February 2026)	2.4379
Lowest (12 February 2016)	0.8692
NAVPU – 31 March 2026	2.2308

Risk Classification

The Fund is suitable for investors with an aggressive profile or for those who take long-term views. As a marked-to-market UITF, the Fund's net asset value and total return may fall as well as rise as a result of stock prices and interest rates movements. On redemption of units, an investor may receive an amount less than the original amount of investment. Prior to investment in the Fund, the investor shall undergo a client suitability assessment procedure to determine whether the Fund is appropriate for him considering his investment objective, risk tolerance, preferences and experience.

BPI-Philam Global Equity Fund Market Commentary

Global equities declined in March, reversing earlier gains as geopolitical tensions escalated following U.S.–Israel strikes on Iran. The MSCI World Index fell in U.S. dollar terms, with risk sentiment deteriorating amid higher energy prices, rising inflation expectations, and a broad flight to safety. Losses were more pronounced outside the United States.

European and Asia Pacific equities came under pressure. European markets weakened on energy supply concerns and rising input costs, while tighter financial conditions further weighed on the outlook. Asia Pacific equities also declined, with both developed and emerging markets affected by energy import exposure and currency pressures.

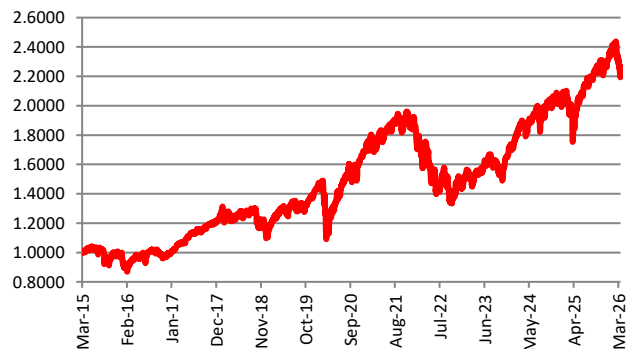
U.S. equities moved lower but showed relative resilience compared to other regions, supported in part by energy sector strength and defensive positioning. Nonetheless, market breadth remained weak, with most sectors ending the month in negative territory.

Emerging market equities were among the hardest hit, particularly in Asia, as higher oil prices and risk aversion drove capital outflows. Energy was the primary outperforming sector globally, while cyclical and growth segments lagged amid a repricing of inflation and interest rate expectations.

Cumulative Performance (%)

YTD	6 Months	1YR	2YR	Since Inception
-3.76	-0.66	14.95	18.03	123.08

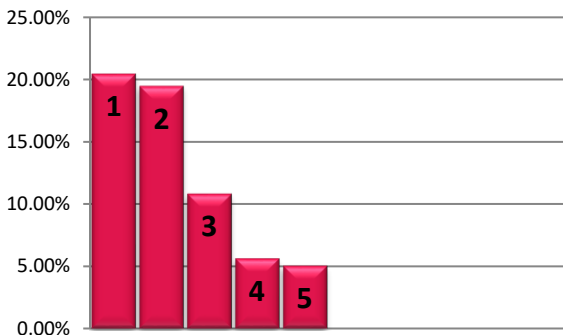
NAVPU Graph



PORTFOLIO COMPOSITION

Allocation	% of Fund
Equity Funds	96.41
Cash and Equivalents	3.94
Other Receivables - Net of Liabilities	-0.35

TOP HOLDINGS Asset Allocation



① JPMorgan Global Select Equity Fund	20.48%
② SPDR S&P 500 ETF	19.48%
③ UBS Global EM Opportunity Fund	10.83%
④ Wellington Asia Technology Fund	5.64%
⑤ Capital Group New Perspective Fund	5.05%