



## FUND FACT SHEET

All data as of November 29, 2024 unless otherwise stated

### Fund Objective and Strategy

The Fund aims to achieve long-term capital appreciation by investing in a diversified portfolio of equities and fixed income instruments. The Fund shall invest at least 90% of its net assets in equity securities under normal market conditions. The Fund aims to outperform its composite benchmark, 90% BPI Philippine Equity Total Return Index plus 10% return of the 91-day Philippine Treasury Bill (net of tax).

### Fund Details

Fund Manager	BPI WEALTH – A Trust Corporation
Inception Date	March 21, 2017
Fund Classification	Equity Fund
Fund Size	PHP 169.45 Million
Fund Currency	Philippine Peso
No. of Holdings	28
Fund Management Fee	2.00% per annum

### Highest and Lowest Unit Price Achieved

Initial (21 March 2017)	1.0000
Highest (30 January 2018)	1.1664
Lowest (23 March 2020)	0.6085
NAVPU – 29 November 2024	0.8861

### Risk Classification

The Fund is suitable for investors who take medium- to long-term views. Prior to investment in the Fund, the investor shall undergo a client suitability assessment procedure to determine whether the Fund is appropriate for him considering his investment objective, risk tolerance, preferences and experience. As a marked-to-market Mutual Fund, the Fund's net asset value, and total return may fluctuate as a result of movements in stock prices and interest rates. On redemption of shares, an investor may receive an amount less than the original amount of investment. Liquidity risk also needs to be taken into account.

## BPI-Philam Growth Fund 2

### Market Commentary

The Philippine Stock Exchange Index (PSEi) fell in November amid large foreign selling following the outcome of the US Presidential Elections. The Donald Trump 2.0 is perceived to strengthen the U.S Dollar which negatively affect emerging markets. The Philippine Peso depreciated to Php59 level during the month. Moreover, the local 3Q 2024 GDP failed to improve market sentiment as it came out at 5.2%, lower than 5.7% consensus estimate.

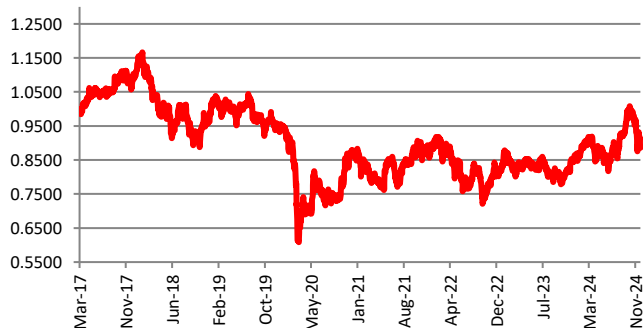
The Average Daily Turnover improved to Php5.275 billion or 5.5% higher month-on-month in November. Meanwhile, in terms of foreign activity, foreigners adopted a risk-off stance which bucked the trend of 4 consecutive months net foreign buying. Foreigners sold off US\$349 million for the month which brought their year-to-date flows to US\$305 million net outflow. Their top sold stocks were ICT (-US\$ 71.8 million), ALI (-US\$ 62 million) and BPI (-US\$ 33.8 million). Foreign participation improved to 52%.

On a per stock basis, the top three index gainers for the month include: CNVRG (+1.86%), BDO (+1.11%) and MBT (+0.33%). Meanwhile, the bottom three performers include: BLOOM (-28.83%), ACEN (-19.92%) and WLCON (-19.25%).

### Cumulative Performance (%)

YTD	6 Months	1YR	2YR	Since Inception
4.99	4.54	8.96	5.11	-11.39

### NAVPU Graph

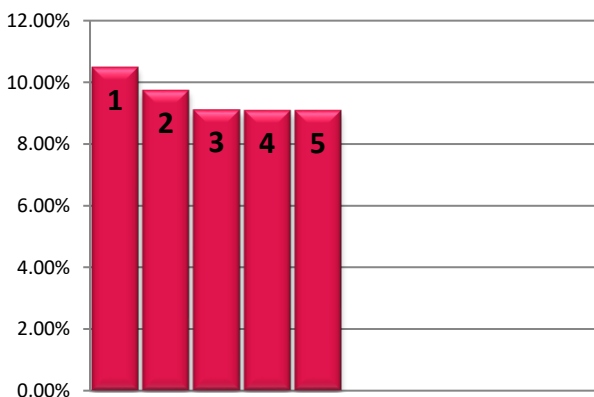


### PORTFOLIO COMPOSITION

Allocation	% of Fund
Equities	98.63
Time Deposits and Money Market	1.37

## TOP HOLDINGS

### Asset Allocation



① BDO Unibank, Inc.	10.49%
② Bank of the Philippine Islands	9.74%
③ SM Prime Holdings, Inc.	9.11%
④ Int'l. Container Terminal Services, Inc.	9.09%
⑤ SM Investments Corporation	9.09%

**Risk Warning:** Past performance is not indicative of future results. Our investment management services relate to a variety of investments, each of which can fluctuate in value. The value of portfolios we manage may fall as well as rise, and the investor may not get back the full amount originally invested. The investment risks vary between different types of instruments. For example, for investments involving exposure to a currency other than that in which the portfolio is denominated, changes in the rate of exchange may cause the value of investments, and consequently the value of the portfolio, to go up or down. In the case of a higher volatility portfolio the loss on realization or cancellation may be very high (including total loss of investment), as the value of such an investment may fall suddenly and substantially. In making an investment decision, prospective investors must rely on their own examination of the merits and risks involved. **Disclaimer:** Unless otherwise noted, all information contained herein is sourced from BPI AIA\* internal data. The content included herein has been shared with various in-house departments within BPI AIA\*, in the ordinary course of completion. BPI AIA\* complies with the confidentiality requirements of their respective jurisdictions. Parts of this presentation may be based on information received from sources we consider reliable. We do not represent that all of this information is accurate or complete, however, and it may not be relied upon as such.