



## FUND FACT SHEET

All data as of September 30, 2024 unless otherwise stated

### Fund Objective and Strategy

The Fund aims to achieve long-term capital appreciation by investing in a diversified portfolio of equities and fixed income instruments. The Fund shall invest at least 90% of its net assets in equity securities under normal market conditions. The Fund aims to outperform its composite benchmark, 90% BPI Philippine Equity Total Return Index plus 10% return of the 91-day Philippine Treasury Bill (net of tax).

### Fund Details

Fund Manager	BPI WEALTH – A Trust Corporation
Inception Date	March 21, 2017
Fund Classification	Equity Fund
Fund Size	PHP 187.32 Million
Fund Currency	Philippine Peso
No. of Holdings	27
Fund Management Fee	2.00% per annum

### Highest and Lowest Unit Price Achieved

Initial (21 March 2017)	1.0000
Highest (30 January 2018)	1.1664
Lowest (23 March 2020)	0.6085
NAVPU – 30 September 2024	0.9720

### Risk Classification

The Fund is suitable for investors who take medium- to long-term views. Prior to investment in the Fund, the investor shall undergo a client suitability assessment procedure to determine whether the Fund is appropriate for him considering his investment objective, risk tolerance, preferences and experience. As a marked-to-market Mutual Fund, the Fund's net asset value, and total return may fluctuate as a result of movements in stock prices and interest rates. On redemption of shares, an investor may receive an amount less than the original amount of investment. Liquidity risk also needs to be taken into account.

## BPI-Philam Growth Fund 2

### Market Commentary

The Philippine Stock Exchange Index (PSEi) surged in September driven by strong foreign flows. The rally emanated from the US Federal Reserve's (The Fed) decision to cut its key overnight borrowing rate by 50 basis points that spurred the appetite for riskier assets. On the local economic front, the Bangko Sentral ng Pilipinas' (BSP) surprise announcement of reducing the reserve requirement ratio (RRR) by 250 basis points to 7% further buoyed the local bourse. The index breached the 7,400 mark until profit-taking took place. By the end of the month, the PSEi settled at 7,272.65 or 5.4% higher month-on-month.

The market's average daily turnover rose by 16% to Php6.57 billion in September from Php5.63 in the prior month. This was supported by net foreign inflow at US\$346 million. This is the biggest monthly inflow for year and has pushed the year-to-date net foreign flow to the positive territory. Top foreign bought stocks were SM (+US\$47.2 million), AC (US\$36.2 million) and ALI (US\$35.3 million).

On a per stock basis, the top three index gainers for the month include: JGS (+18.30%), GTCAP (+16.99%) and URC (+13.96%). Meanwhile, the bottom three performers were: SMC (-9.09%), SCC (-4.13%) and WLCN (-2.66%).

### Cumulative Performance (%)

YTD	6 Months	1YR	2YR	Since Inception
15.17	7.14	18.45	34.70	-2.80

### NAVPU Graph

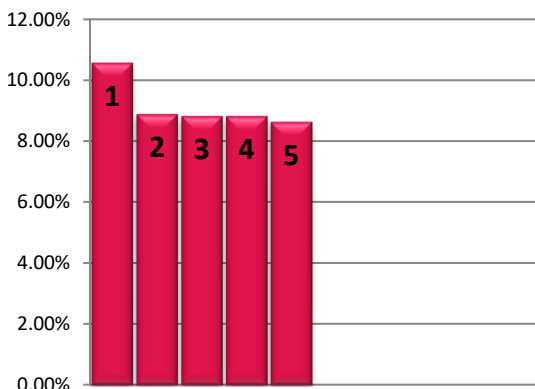


### PORTFOLIO COMPOSITION

Allocation	% of Fund
Equities	94.95
Time Deposits and Money Market	5.05

## TOP HOLDINGS

### Asset Allocation



① BDO Unibank, Inc.	10.57%
② Bank of the Philippine Islands	8.88%
③ SM Investments Corporation	8.82%
④ Int'l. Container Terminal Services, Inc.	8.82%
⑤ SM Prime Holdings, Inc.	8.63%

**Risk Warning:** Past performance is not indicative of future results. Our investment management services relate to a variety of investments, each of which can fluctuate in value. The value of portfolios we manage may fall as well as rise, and the investor may not get back the full amount originally invested. The investment risks vary between different types of instruments. For example, for investments involving exposure to a currency other than that in which the portfolio is denominated, changes in the rate of exchange may cause the value of investments, and consequently the value of the portfolio, to go up or down. In the case of a higher volatility portfolio the loss on realization or cancellation may be very high (including total loss of investment), as the value of such an investment may fall suddenly and substantially. In making an investment decision, prospective investors must rely on their own examination of the merits and risks involved. **Disclaimer:** Unless otherwise noted, all information contained herein is sourced from BPI AIA's internal data. The content included herein has been shared with various in-house departments within BPI AIA, in the ordinary course of completion. BPI AIA complies with the confidentiality requirements of their respective jurisdictions. Parts of this presentation may be based on information received from sources we consider reliable. We do not represent that all of this information is accurate or complete, however, and it may not be relied upon as such.