

FUND FACT SHEET

All data as of April 30, 2025 unless otherwise stated

Fund Objective and Strategy

The Fund aims to achieve long-term capital appreciation by investing in a diversified portfolio of equities and fixed income instruments. The Fund shall invest at least 90% of its net assets in equity securities under normal market conditions. The Fund aims to outperform its composite benchmark, 90% BPI Philippine Equity Total Return Index plus 10% return of the 91-day Philippine Treasury Bill (net of tax).

Fund Details

Fund Manager	BPI WEALTH – A Trust Corporation
Inception Date	March 21, 2017
Fund Classification	Equity Fund
Fund Size	PHP 172.59 Million
Fund Currency	Philippine Peso
No. of Holdings	27
Fund Management Fee	2.00% per annum

Highest and Lowest Unit Price Achieved

Initial (21 March 2017)	1.0000
Highest (30 January 2018)	1.1664
Lowest (23 March 2020)	0.6085
NAVPU – 30 April 2025	0.8765

Risk Classification

The Fund is suitable for investors with an aggressive profile or for those who take long-term views. As a marked-to-market UITF, the Fund's net asset value and total return may fall as well as rise as a result of stock prices and interest rates movements. On redemption of units, an investor may receive an amount less than the original amount of investment. Prior to investment in the Fund, the investor shall undergo a client suitability assessment procedure to determine whether the Fund is appropriate for him considering his investment objective, risk tolerance, preferences and experience.

BPI-Philam Growth Fund 2 Market Commentary

The Philippine Stock Exchange Index (PSEi) rose for the third month in a row despite the early sell-off that transpired following the effectivity of US President Donald Trump's tariffs on April 2 and the succeeding announcement of reciprocal tariffs. Initially, the index sank to a 52-week low in the 5,800-level but managed to bounce back after the US President decided to take a "pause" on the tariffs, which lifted sentiment and supported a relief rally. Moreover, a slew of domestic macro-economic developments further propelled the recovery, these include March inflation coming out lower-than expected at 1.8%, a 25 basis-point rate cut by the Bangko Sentral ng Pilipinas (BSP), as well as the continued appreciation of the Philippine peso. Given those, the PSEi climbed 2.82% to 6,354.99 in April.

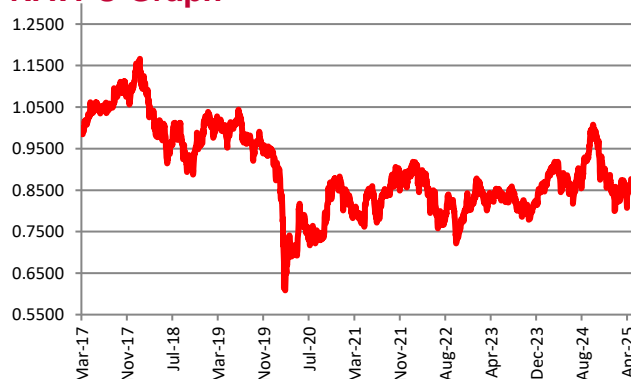
In terms of trading activity, the Average Daily Turnover grew by 3.5% to Php5.80billion in April. In terms of foreign activity, foreigners turned net sellers, registering US\$54 million amidst the tariffs pronouncements. Top foreign sold stocks were ICT (US\$50.1 million), SMPH (US\$16.2 million), and JFC (US\$11.80 million). Foreign participation remained at 55% in April.

On a per stock basis, the top three index gainers for the month include: URC (+18.21%), BLOOM (+16.78%) and PGOLD (+13.70%). Meanwhile, the bottom three performers were: GLO (-12.17%), ACEN (-12.17%) and DMC (-7.67%).

Cumulative Performance (%)

YTD	6 Months	1YR	2YR	Since Inception
0.52	-8.02	-0.66	3.62	-12.35

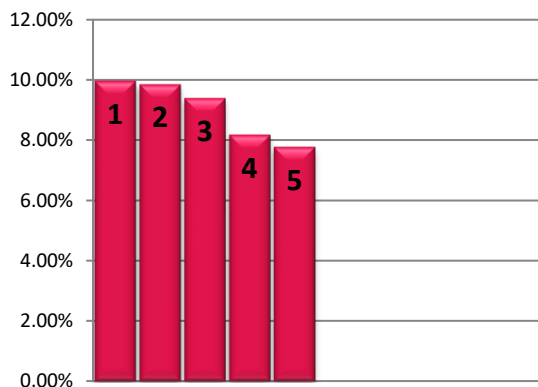
NAVPU Graph



PORTFOLIO COMPOSITION

Allocation	% of Fund
Equities	95.90
Time Deposits and Money Market	4.10

TOP HOLDINGS Asset Allocation



① SM Investments Corporation	9.96%
② Bank of the Philippine Islands	9.84%
③ BDO Unibank, Inc.	9.39%
④ Int'l. Container Terminal Services, Inc.	8.17%
⑤ SM Prime Holdings, Inc.	7.77%

Risk Warning: Past performance is not indicative of future results. Our investment management services relate to a variety of investments, each of which can fluctuate in value. The value of portfolios we manage may fall as well as rise, and the investor may not get back the full amount originally invested. The investment risks vary between different types of instruments. For example, for investments involving exposure to a currency other than that in which the portfolio is denominated, changes in the rate of exchange may cause the value of investments, and consequently the value of the portfolio, to go up or down. In the case of a higher volatility portfolio the loss on realization or cancellation may be very high (including total loss of investment), as the value of such an investment may fall suddenly and substantially. In making an investment decision, prospective investors must rely on their own examination of the merits and risks involved. **Disclaimer:** Unless otherwise noted, all information contained herein is sourced from BPI AIA* internal data. The content included herein has been shared with various in-house departments within BPI AIA*, in the ordinary course of completion. BPI AIA* complies with the confidentiality requirements of their respective jurisdictions. Parts of this presentation may be based on information received from sources we consider reliable. We do not represent that all of this information is accurate or complete, however, and it may not be relied upon as such.