

FUND FACT SHEET

All data as of December 29, 2025 unless otherwise stated

Fund Objective and Strategy

The Fund aims to achieve long-term capital appreciation by investing in a diversified portfolio of equities and fixed income instruments. The Fund shall invest at least 90% of its net assets in equity securities under normal market conditions. The Fund aims to outperform its composite benchmark, 90% BPI Philippine Equity Total Return Index plus 10% return of the 91-day Philippine Treasury Bill (net of tax).

Fund Details

| | |
|---------------------|----------------------------------|
| Fund Manager | BPI WEALTH – A Trust Corporation |
| Inception Date | March 21, 2017 |
| Fund Classification | Equity Fund |
| Fund Size | PHP 153.70 Million |
| Fund Currency | Philippine Peso |
| No. of Holdings | 26 |
| Fund Management Fee | 2.00% per annum |

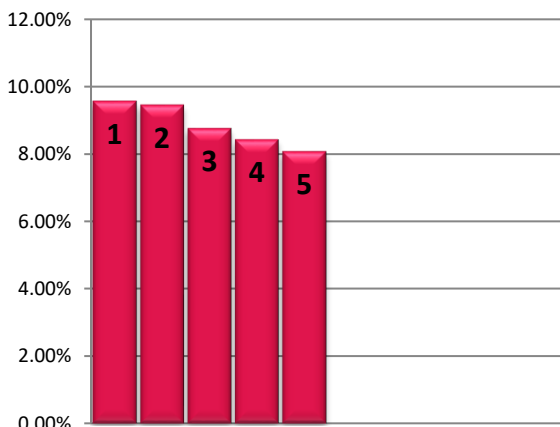
Highest and Lowest Unit Price Achieved

| | |
|---------------------------|--------|
| Initial (21 March 2017) | 1.0000 |
| Highest (30 January 2018) | 1.1664 |
| Lowest (23 March 2020) | 0.6085 |
| NAVPU – 29 December 2025 | 0.8339 |

Risk Classification

The Fund is suitable for investors with an aggressive profile or for those who take long-term views. As a marked-to-market UITF, the Fund's net asset value and total return may fall as well as rise as a result of stock prices and interest rates movements. On redemption of units, an investor may receive an amount less than the original amount of investment. Prior to investment in the Fund, the investor shall undergo a client suitability assessment procedure to determine whether the Fund is appropriate for him considering his investment objective, risk tolerance, preferences and experience.

TOP HOLDINGS Asset Allocation



BPI-Philam Growth Fund 2 Market Commentary

The Philippine Stock Exchange (PSEi) ended the year on a positive note and managed to close above the psychological 6,000 level. Lower-than-expected domestic November inflation print and rate cuts from both the US Federal Reserve (The Fed) and the Bangko Sentral ng Pilipinas' provided the lift. Meanwhile, ongoing worries over the country's slowing economic growth, peso weakness and foreign selling capped the upside. The PSEi closed 2025 at 6,052.92 or +0.51% on a month-on-month basis.

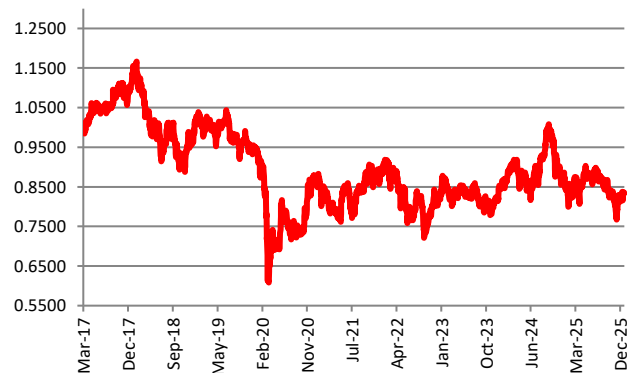
Trading activity slowed in December, with Average Daily Turnover at Php5.73 billion or 7.7% lower than in prior month's Php6.22 billion. Foreigners were net sellers with a hefty US\$202 million and were more active at 54% participation.

On a per stock basis, the top three index gainers for the month include: AGI (+16.50%), ALI (+10.32%) and CBC (+9.83%). Meanwhile, the bottom three performers were: PLUS (-33.88%), PGOLD (-9.52%) and SM (-5.47%).

Cumulative Performance (%)

| YTD | 6 Months | 1YR | 2YR | Since Inception |
|-------|----------|-------|-------|-----------------|
| -4.37 | -4.89 | -4.37 | -1.20 | -16.61 |

NAVPU Graph



PORTFOLIO COMPOSITION

| Allocation | % of Fund |
|--------------------------------|-----------|
| Equities | 95.92 |
| Time Deposits and Money Market | 4.08 |

| | |
|---|-------|
| ① Int'l Container Terminal Services, Inc. | 9.56% |
| ② Bank of the Philippine Islands | 9.45% |
| ③ BDO Unibank, Inc. | 8.75% |
| ④ SM Corporation | 8.43% |
| ⑤ SM Prime Holdings | 8.07% |

Risk Warning: Past performance is not indicative of future results. Our investment management services relate to a variety of investments, each of which can fluctuate in value. The value of portfolios we manage may fall as well as rise, and the investor may not get back the full amount originally invested. The investment risks vary between different types of instruments. For example, for investments involving exposure to a currency other than that in which the portfolio is denominated, changes in the rate of exchange may cause the value of investments, and consequently the value of the portfolio, to go up or down. In the case of a higher volatility portfolio the loss on realization or cancellation may be very high (including total loss of investment), as the value of such an investment may fall suddenly and substantially. In making an investment decision, prospective investors must rely on their own examination of the merits and risks involved. **Disclaimer:** Unless otherwise noted, all information contained herein is sourced from BPI AIA* internal data. The content included herein has been shared with various in-house departments within BPI AIA*, in the ordinary course of completion. BPI AIA* complies with the confidentiality requirements of their respective jurisdictions. Parts of this presentation may be based on information received from sources we consider reliable. We do not represent that all of this information is accurate or complete, however, and it may not be relied upon as such.