

FUND FACT SHEET

All data as of January 31, 2025 unless otherwise stated

Fund Objective and Strategy

The Fund aims to achieve long-term capital appreciation by investing in a diversified portfolio of equities and fixed income instruments. The Fund shall invest at least 90% of its net assets in equity securities under normal market conditions. The Fund aims to outperform its composite benchmark, 90% BPI Philippine Equity Total Return Index plus 10% return of the 91-day Philippine Treasury Bill (net of tax).

Fund Details

Fund Manager	BPI WEALTH – A Trust Corporation
Inception Date	March 21, 2017
Fund Classification	Equity Fund
Fund Size	PHP 153.34 Million
Fund Currency	Philippine Peso
No. of Holdings	27
Fund Management Fee	2.00% per annum

Highest and Lowest Unit Price Achieved

Initial (21 March 2017)	1.0000
Highest (30 January 2018)	1.1664
Lowest (23 March 2020)	0.6085
NAVPU – 31 January 2025	0.7993

Risk Classification

The Fund is suitable for investors with an aggressive profile or for those who take long-term views. As a marked-to-market UITF, the Fund's net asset value and total return may fall as well as rise as a result of stock prices and interest rates movements. On redemption of units, an investor may receive an amount less than the original amount of investment. Prior to investment in the Fund, the investor shall undergo a client suitability assessment procedure to determine whether the Fund is appropriate for him considering his investment objective, risk tolerance, preferences and experience.

BPI-Philam Growth Fund 2 Market Commentary

The Philippine Stock Exchange Index (PSEi) took a dive to start a year amidst a lackluster month. Investors erred on the side of caution on persisting concerns over the Trump 2.0 presidency and less favorable domestic economic data. Trading activity accelerated in the latter part of the month following the PSE semi-annual index review or PSE rebalancing where China Banking Corp (CBC) and AREIT Inc (AREIT) got included in the 30 names basket, replacing Wilcon Depot Inc (WILCON) and Nickel Asia Corp (NIKL). The PSEi began 2025 by falling 10.20% month-on-month to 5,862.59. T

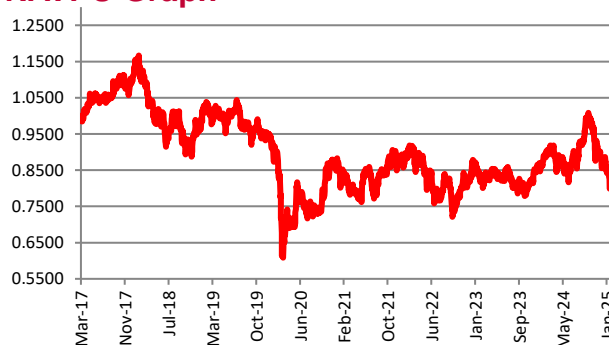
Trading activity, as measured by the Average Daily Turnover, improved by 1.11% to Php4.88 billion in January. This was mainly lifted by the PSE rebalancing in the last trading day of the month. Prior to the day, the Average Daily Turnover only recorded at Php4.10 billion. In terms of foreign activity, foreigners were net sellers with US\$113 million outflow. Top foreign sold stocks were ALI (-US\$21.2 million), MBT (-US\$20.6 million), and BDO (-US\$19.5 million). Foreign participation in January was at 49%.

On a per stock basis, the top three index gainers for the month include: CBC (+46.46%), AREIT (+10.67%) and TEL (+3.47%). Meanwhile, the bottom three performers include: WLCON (-41.26%), NIKL (-37.82%) and AGI (-33.33%).

Cumulative Performance (%)

YTD	6 Months	1YR	2YR	Since Inception
-8.34	-8.93	-7.64	-4.92	-20.07

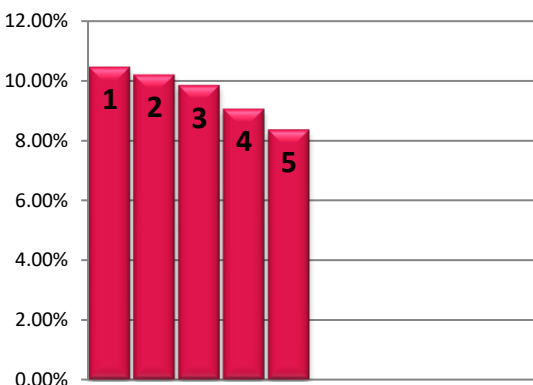
NAVPU Graph



PORTFOLIO COMPOSITION

Allocation	% of Fund
Equities	98.89
Time Deposits and Money Market	1.11

TOP HOLDINGS Asset Allocation



① BDO Unibank, Inc.	10.47%
② Int'l. Container Terminal Services, Inc.	10.21%
③ Bank of the Philippine Islands	9.86%
④ SM Investments Corporation	9.07%
⑤ SM Prime Holdings, Inc.	8.37%