

FUND FACT SHEET

All data as of June 30, 2025 unless otherwise stated

Fund Objective and Strategy

The Fund aims to achieve long-term capital appreciation by investing in a diversified portfolio of equities and fixed income instruments. The Fund shall invest at least 90% of its net assets in equity securities under normal market conditions. The Fund aims to outperform its composite benchmark, 90% BPI Philippine Equity Total Return Index plus 10% return of the 91-day Philippine Treasury Bill (net of tax).

Fund Details

Fund Manager	BPI WEALTH – A Trust Corporation
Inception Date	March 21, 2017
Fund Classification	Equity Fund
Fund Size	PHP 167.43 Million
Fund Currency	Philippine Peso
No. of Holdings	28
Fund Management Fee	2.00% per annum

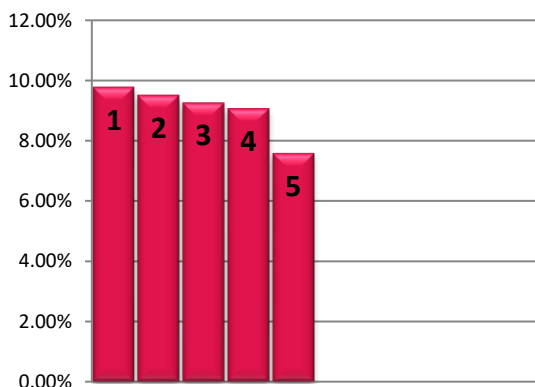
Highest and Lowest Unit Price Achieved

Initial (21 March 2017)	1.0000
Highest (30 January 2018)	1.1664
Lowest (23 March 2020)	0.6085
NAVPU – 30 June 2025	0.8768

Risk Classification

The Fund is suitable for investors with an aggressive profile or for those who take long-term views. As a marked-to-market UITF, the Fund's net asset value and total return may fall as well as rise as a result of stock prices and interest rates movements. On redemption of units, an investor may receive an amount less than the original amount of investment. Prior to investment in the Fund, the investor shall undergo a client suitability assessment procedure to determine whether the Fund is appropriate for him considering his investment objective, risk tolerance, preferences and experience.

TOP HOLDINGS Asset Allocation



BPI-Philam Growth Fund 2 Market Commentary

The Philippine Stock Exchange index (PSEi) traded sideways most of the month as the market digested a mix bag of macro-economic developments. Investor optimism was evident on the release of May inflation print which turned out better than expected. This, in turn, fueled bets of another round of rate cuts by the Bangko Sentral ng Pilipinas (BSP). However, optimism soon turned into jitters on renewed geopolitical tensions in the Middle East leading to a spike in global oil prices and weakening of the Peso. Towards the latter part of the month, the market saw FTSE rebalancing where the country registered a down-weight en-route to a net foreign outflow. The PSEi rose modestly by 0.37% month-on-month to 6,364.94 in June.

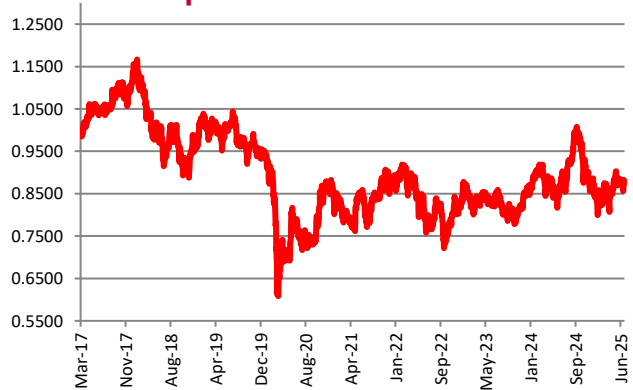
In terms of trading activity, the PSEi recorded an Average Daily Turnover was healthy Php6.642 billion in June. Meanwhile, foreigners remained net sellers for the third straight month at US\$72 million, partly due to FTSE rebalancing.

On a per stock basis, the top three index gainers for the month include: BLOOM (+22.25%), ALI (+17.39%) and PGOLD (+16.13%). Meanwhile, the bottom three performers were: CBC (-10.12%), BPI (-6.54%) and BDO (-5.09%).

Cumulative Performance (%)

YTD	6 Months	1YR	2YR	Since Inception
0.55	0.55	2.59	5.50	-12.32

NAVPU Graph



PORTFOLIO COMPOSITION

Allocation	% of Fund
Equities	96.76
Time Deposits and Money Market	3.24

① SM Investments Corporation	9.79%
② Int'l. Container Terminal Services, Inc.	9.52%
③ Bank of the Philippine Islands	9.27%
④ BDO Unibank, Inc.	9.08%
⑤ SM Prime Holdings, Inc.	7.59%