

# FUND FACT SHEET

All data as of November 28, 2025 unless otherwise stated

## Fund Objective and Strategy

The Fund aims to achieve long-term capital appreciation by investing in a diversified portfolio of equities and fixed income instruments. The Fund shall invest at least 90% of its net assets in equity securities under normal market conditions. The Fund aims to outperform its composite benchmark, 90% BPI Philippine Equity Total Return Index plus 10% return of the 91-day Philippine Treasury Bill (net of tax).

## Fund Details

Fund Manager	BPI WEALTH – A Trust Corporation
Inception Date	March 21, 2017
Fund Classification	Equity Fund
Fund Size	PHP 153.23 Million
Fund Currency	Philippine Peso
No. of Holdings	28
Fund Management Fee	2.00% per annum

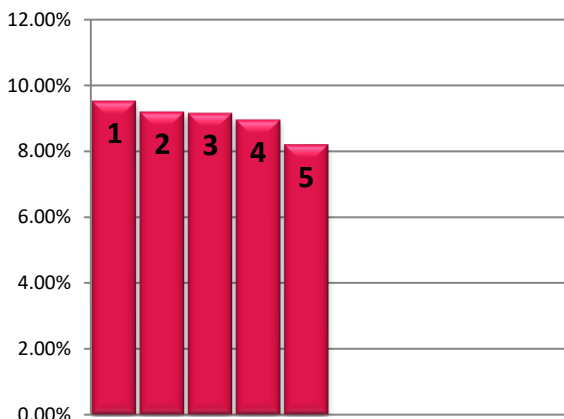
## Highest and Lowest Unit Price Achieved

Initial (21 March 2017)	1.0000
Highest (30 January 2018)	1.1664
Lowest (23 March 2020)	0.6085
NAVPU – 28 November 2025	0.8283

## Risk Classification

The Fund is suitable for investors with an aggressive profile or for those who take long-term views. As a marked-to-market UITF, the Fund's net asset value and total return may fall as well as rise as a result of stock prices and interest rates movements. On redemption of units, an investor may receive an amount less than the original amount of investment. Prior to investment in the Fund, the investor shall undergo a client suitability assessment procedure to determine whether the Fund is appropriate for him considering his investment objective, risk tolerance, preferences and experience.

## TOP HOLDINGS Asset Allocation



**Risk Warning:** Past performance is not indicative of future results. Our investment management services relate to a variety of investments, each of which can fluctuate in value. The value of portfolios we manage may fall as well as rise, and the investor may not get back the full amount originally invested. The investment risks vary between different types of instruments. For example, for investments involving exposure to a currency other than that in which the portfolio is denominated, changes in the rate of exchange may cause the value of investments, and consequently the value of the portfolio, to go up or down. In the case of a higher volatility portfolio the loss on realization or cancellation may be very high (including total loss of investment), as the value of such an investment may fall suddenly and substantially. In making an investment decision, prospective investors must rely on their own examination of the merits and risks involved. **Disclaimer:** Unless otherwise noted, all information contained herein is sourced from BPI AIA\* internal data. The content included herein has been shared with various in-house departments within BPI AIA\*, in the ordinary course of completion. BPI AIA\* complies with the confidentiality requirements of their respective jurisdictions. Parts of this presentation may be based on information received from sources we consider reliable. We do not represent that all of this information is accurate or complete, however, and it may not be relied upon as such.

## BPI-Philam Growth Fund 2 Market Commentary

The Philippine Stock Exchange Index (PSEi) had a choppy month in November before ultimately settling higher. The local bourse almost fell to a cliff, reaching sub-5,600, following a slew of weak domestic economic data such as dismal 3Q GDP, uninspiring 3Q corporate earnings coupled with heightened political issues. Concerns over Federal Reserve Policy Rates due to prolonged US Government Shutdown likewise dragged investor sentiment. However, the market was lifted by local bargain-hunting towards the latter part of the month. The PSEi rose by 1.56% month-on-month to close at 6,022.24.

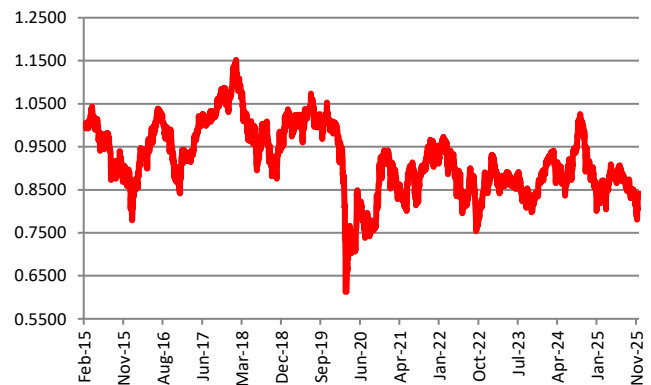
Trading activity surged in November with Average Daily Turnover registering at Php6.22 billion from Php5.00 billion following some key corporate action events such as the Maynilad (MYNLD) IPO and AREIT Secondary Share Placement. On foreign activity, foreigners turned "Net Buyers" at US\$78 million.

On a per stock basis, the top three index gainers for the month include: CNVRG (+22.26%), SMC (+21.77%) and PLUS (+16.95%). Meanwhile, the bottom three performers were: URC (-13.70%), JFC (-12.74%) and SCC (-11.95%).

## Cumulative Performance (%)

YTD	6 Months	1YR	2YR	Since Inception
-5.01	-5.14	-6.52	1.86	-17.17

## NAVPU Graph



## PORTFOLIO COMPOSITION

Allocation	% of Fund
Equities	96.80
Time Deposits and Money Market	3.20

① BDO Unibank, Inc.	9.54%
② Int'l. Container Terminal Services, Inc.	9.20%
③ Metropolitan Bank & Trust Co.	9.17%
④ LT Group	8.97%
⑤ SM Prime Holdings, Inc.	8.21%