

FUND FACT SHEET

All data as of January 30, 2026 unless otherwise stated

Fund Objective and Strategy

The Fund aims to achieve long-term capital appreciation by investing in a diversified portfolio of equities and fixed income instruments. The Fund shall invest at least 90% of its net assets in equity securities under normal market conditions. The Fund aims to outperform its composite benchmark, 90% BPI Philippine Equity Total Return Index plus 10% return of the 91-day Philippine Treasury Bill (net of tax).

Fund Details

Fund Manager	BPI WEALTH – A Trust Corporation
Inception Date	March 21, 2017
Fund Classification	Equity Fund
Fund Size	PHP 159.87 Million
Fund Currency	Philippine Peso
No. of Holdings	26
Fund Management Fee	2.00% per annum

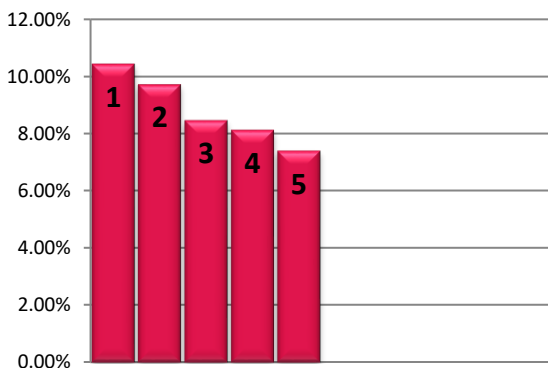
Highest and Lowest Unit Price Achieved

Initial (21 March 2017)	1.0000
Highest (30 January 2018)	1.1664
Lowest (23 March 2020)	0.6085
NAVPU – 30 January 2026	0.8675

Risk Classification

The Fund is suitable for investors with an aggressive profile or for those who take long-term views. As a marked-to-market UITF, the Fund's net asset value and total return may fall as well as rise as a result of stock prices and interest rates movements. On redemption of units, an investor may receive an amount less than the original amount of investment. Prior to investment in the Fund, the investor shall undergo a client suitability assessment procedure to determine whether the Fund is appropriate for him considering his investment objective, risk tolerance, preferences and experience.

TOP HOLDINGS Asset Allocation



BPI-Philam Growth Fund 2 Market Commentary

The Philippine Stock Exchange Index (PSEI) is off to a roaring start, climbing by 4.56% month-on-month, to close at 6,328.97. Foreign buying propelled the market in the early days of the month, almost reaching the 6,500 mark. However, gains were pared by local profit-taking, peso depreciation and risk-aversion following geopolitical tensions and the release of lower-than-expected 4QGDP. On the last day of the month, the local bourse regained its footing spurred by PSE rebalancing-related activities.

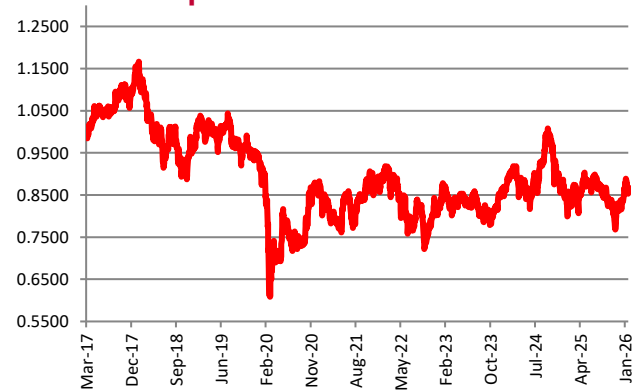
Average Value Turnover registered at Php6.52 billion or up 13% on a month-on-month basis. The improved volume got a lift from PSE rebalancing on month-end. Meanwhile, foreigners were huge buyers, recording at US\$226 million.

On a per stock basis, the top three index gainers for the month include: JGS (+17.55%), JFC (+13.89%) and AEV (+13.57%). Meanwhile, the bottom three performers were: PLUS (-19.01%), RCR (-9.98%) and PGOLD (-5.79%).

Cumulative Performance (%)

YTD	6 Months	1YR	2YR	Since Inception
4.03	0.43	8.53	0.24	-13.25

NAVPU Graph



PORTFOLIO COMPOSITION

Allocation	% of Fund
Equities	96.42
Time Deposits and Money Market	3.58

① Int'l. Container Terminal Services, Inc.	10.43%
② Bank of the Philippine Islands	9.72%
③ BDO Unibank, Inc.	8.46%
④ SM Investments Corporation	8.12%
⑤ SM Prime Holdings, Inc.	7.39%