

# FUND FACT SHEET

All data as of June 30, 2025 unless otherwise stated

## Fund Objective and Strategy

The Fund aims to achieve long-term capital appreciation by investing in a diversified portfolio of equities and fixed income instruments. The Fund shall invest at least 90% of its net assets in equity securities under normal market conditions. The Fund aims to outperform its composite benchmark, 90% BPI Philippine Equity Total Return Index plus 10% return of the 91-day Philippine Treasury Bill (net of tax).

## Fund Details

Fund Manager	BPI WEALTH – A Trust Corporation
Inception Date	October 25, 2011
Fund Classification	Equity Fund
Fund Size	PHP 2,217.74 Million
Fund Currency	Philippine Peso
No. of Holdings	33
Fund Management Fee	2.00% per annum

## Highest and Lowest Unit Price Achieved

Initial (25 October 2011)	1.0000
Highest (30 January 2018)	1.6863
Lowest (17 March 2020)	0.8894
NAVPU – 30 June 2025	1.2172

## Risk Classification

The Fund is suitable for investors who take medium- to long-term views. Prior to investment in the Fund, the investor shall undergo a client suitability assessment procedure to determine whether the Fund is appropriate for him considering his investment objective, risk tolerance, preferences and experience. As a marked-to-market Mutual Fund, the Fund's net asset value, and total return may fluctuate as a result of movements in stock prices and interest rates. On redemption of shares, an investor may receive an amount less than the original amount of investment. Liquidity risk also needs to be taken into account.

## BPI-Philam Growth Fund Market Commentary

The Philippine Stock Exchange index (PSEi) traded sideways most of the month as the market digested a mix bag of macro-economic developments. Investor optimism was evident on the release of May inflation print which turned out better than expected. This, in turn, fueled bets of another round of rate cuts by the Bangko Sentral ng Pilipinas (BSP). However, optimism soon turned into jitters on renewed geopolitical tensions in the Middle East leading to a spike in global oil prices and weakening of the Peso. Towards the latter part of the month, the market saw FTSE rebalancing where the country registered a down-weight en-route to a net foreign outflow. The PSEi rose modestly by 0.37% month-on-month to 6,364.94 in June.

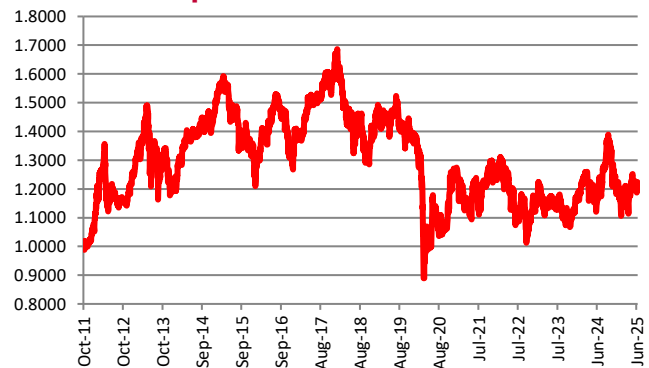
In terms of trading activity, the PSEi recorded an Average Daily Turnover was healthy Php6.642 billion in June. Meanwhile, foreigners remained net sellers for the third straight month at US\$72 million, partly due to FTSE rebalancing.

On a per stock basis, the top three index gainers for the month include: BLOOM (+22.25%), ALI (+17.39%) and PGOLD (+16.13%). Meanwhile, the bottom three performers were: CBC (-10.12%), BPI (-6.54%) and BDO (-5.09%).

## Cumulative Performance (%)

YTD	6 Months	1YR	2YR	Since Inception
1.12	1.12	3.86	6.56	21.72

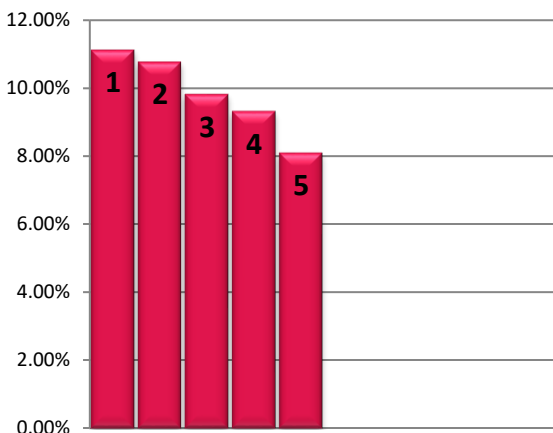
## NAVPU Graph



## PORTFOLIO COMPOSITION

Allocation	% of Fund
Equities	98.48
Fixed Income	0.00
Cash & Cash Equivalents	1.52
Money Market Funds	0.00

## TOP HOLDINGS Asset Allocation



① Int'l. Container Terminal Services, Inc.	11.13%
② SM Investments Corporation	10.78%
③ BDO Unibank, Inc.	9.83%
④ Bank of the Philippine Islands	9.33%
⑤ SM Prime Holdings, Inc.	8.10%

**Risk Warning:** Past performance is not indicative of future results. Our investment management services relate to a variety of investments, each of which can fluctuate in value. The value of portfolios we manage may fall as well as rise, and the investor may not get back the full amount originally invested. The investment risks vary between different types of instruments. For example, for investments involving exposure to a currency other than that in which the portfolio is denominated, changes in the rate of exchange may cause the value of investments, and consequently the value of the portfolio, to go up or down. In the case of a higher volatility portfolio the loss on realization or cancellation may be very high (including total loss of investment), as the value of such an investment may fall suddenly and substantially. In making an investment decision, prospective investors must rely on their own examination of the merits and risks involved. **Disclaimer:** Unless otherwise noted, all information contained herein is sourced from BPI AIA\* internal data. The content included herein has been shared with various in-house departments within BPI AIA\*, in the ordinary course of completion. BPI AIA\* complies with the confidentiality requirements of their respective jurisdictions. Parts of this presentation may be based on information received from sources we consider reliable. We do not represent that all of this information is accurate or complete, however, and it may not be relied upon as such.