

FUND FACT SHEET

All data as of May 30, 2025 unless otherwise stated

Fund Objective and Strategy

The Fund aims to achieve long-term capital appreciation by investing in a diversified portfolio of equities and fixed income instruments. The Fund shall invest at least 75% of its net assets in equity securities under normal market conditions.

Fund Details

Fund Manager	BPI WEALTH – A Trust Corporation
Inception Date	October 25, 2011
Fund Classification	Equity Fund
Fund Size	PHP 2,221.31 Million
Fund Currency	Philippine Peso
No. of Holdings	32
Fund Management Fee	2.00% per annum

Highest and Lowest Unit Price Achieved

Initial (25 October 2011)	1.0000
Highest (30 January 2018)	1.6863
Lowest (17 March 2020)	0.8894
NAVPU – 30 May 2025	1.2107

Risk Classification

The Fund is suitable for investors who take medium- to long-term views. Prior to investment in the Fund, the investor shall undergo a client suitability assessment procedure to determine whether the Fund is appropriate for him considering his investment objective, risk tolerance, preferences and experience. As a marked-to-market Mutual Fund, the Fund's net asset value, and total return may fluctuate as a result of movements in stock prices and interest rates. On redemption of shares, an investor may receive an amount less than the original amount of investment. Liquidity risk also needs to be taken into account.

BPI-Philam Growth Fund Market Commentary

The Philippine Stock Exchange Index (PSEi) snapped its three-month winning streak as the index slipped by 0.2% to 6,341.53. The local bourse surged early on as global developments particularly on the ever-pressing US Tariff issues continued to move markets. US and China struck a temporary trade deal that covered a 90-day pause on tariffs and a decline in reciprocal tariffs by 115 percentage points. Moreover, US President Donald Trump postponed the 50% tariffs implementation on European Union imports. On the local scene, sentiment was supported by the strong Philippine peso after trading below the Php56 level. However, gains were capped at the latter part of the month on the back of slower-than-expected 1Q GDP for the Philippines at 5.4% compared to median estimate of 5.8%. The index was dragged even further following the MSCI rebalancing at month-end.

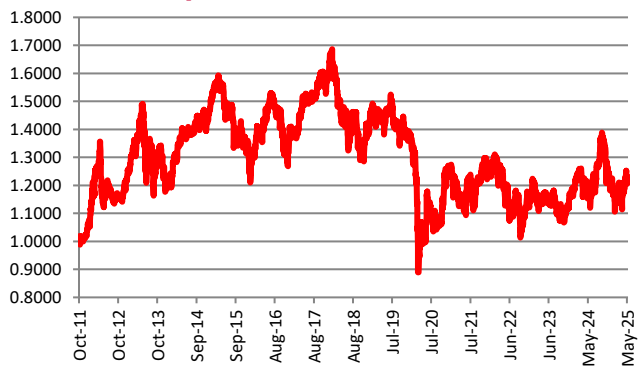
On trading activity, the PSEi recorded an Average Daily Turnover of Php6.35 billion or 9% higher on a month-on-month basis. In terms of foreign activity, foreigners remained net sellers at US\$259 million dragged by a US\$283 million block sale of RRHI shares. Excluding the transaction, foreigners would have been net buyers.

On a per stock basis, the top three index gainers for the month include: AGI (+36.27%), BLOOM (+22.58%) and ICT (+20.52%). Meanwhile, the bottom three performers were: CBC (-16.92%), GLO (-8.81%) and ALI (-8.18%).

Cumulative Performance (%)

YTD	6 Months	1YR	2YR	Since Inception
0.58	-0.97	4.16	5.81	21.07

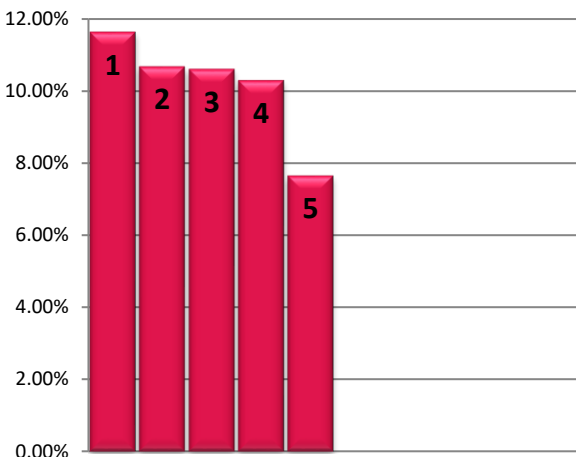
NAVPU Graph



PORTFOLIO COMPOSITION

Allocation	% of Fund
Equities	98.66
Fixed Income	0.00
Cash & Cash Equivalents	1.34
Money Market Funds	0.00

TOP HOLDINGS Asset Allocation



① Int'l. Container Terminal Services, Inc.	11.64%
② Bank of the Philippine Islands	10.68%
③ BDO Unibank, Inc.	10.61%
④ SM Investments Corporation	10.30%
⑤ SM Prime Holdings, Inc.	7.65%

Risk Warning: Past performance is not indicative of future results. Our investment management services relate to a variety of investments, each of which can fluctuate in value. The value of portfolios we manage may fall as well as rise, and the investor may not get back the full amount originally invested. The investment risks vary between different types of instruments. For example, for investments involving exposure to a currency other than that in which the portfolio is denominated, changes in the rate of exchange may cause the value of investments, and consequently the value of the portfolio, to go up or down. In the case of a higher volatility portfolio the loss on realization or cancellation may be very high (including total loss of investment), as the value of such an investment may fall suddenly and substantially. In making an investment decision, prospective investors must rely on their own examination of the merits and risks involved. **Disclaimer:** Unless otherwise noted, all information contained herein is sourced from BPI AIA* internal data. The content included herein has been shared with various in-house departments within BPI AIA*, in the ordinary course of completion. BPI AIA* complies with the confidentiality requirements of their respective jurisdictions. Parts of this presentation may be based on information received from sources we consider reliable. We do not represent that all of this information is accurate or complete, however, and it may not be relied upon as such.