

FUND FACT SHEET

All data as of November 29, 2024 unless otherwise stated

Fund Objective and Strategy

The Fund aims to achieve long-term capital and income growth by investing in a diversified portfolio of fixed income and equity securities. The Fund aims to outperform its benchmark, which is composed of 70% BPI Philippine Government Bond Index and 30% Philippine Stock Exchange Index.

Fund Details

| | |
|---------------------|----------------------------------|
| Fund Manager | BPI WEALTH – A Trust Corporation |
| Inception Date | September 11, 2012 |
| Fund Classification | Balanced Fund |
| Fund Size | PHP 670.50 Million |
| Fund Currency | Philippine Peso |
| No. of Holdings | 40 |
| Fund Management Fee | 1.50% per annum |

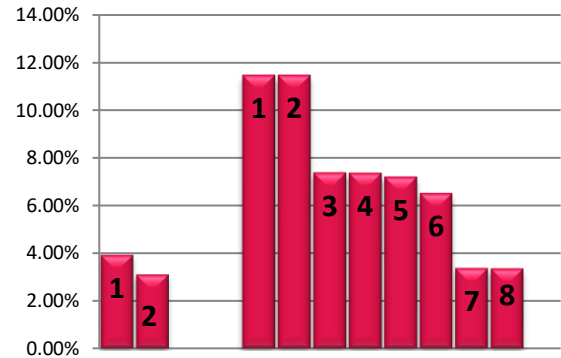
Highest and Lowest Unit Price Achieved

| | |
|-----------------------------|--------|
| Initial (11 September 2012) | 1.0000 |
| Highest (08 October 2024) | 1.2965 |
| Lowest (10 October 2012) | 0.9829 |
| NAVPU – 29 November 2024 | 1.2400 |

Risk Classification

The Fund is suitable for investors with an aggressive profile or for those who take medium- to long-term views. As a marked-to-market UITF, the Fund's net asset value and total return may fall as well as rise as a result of stock prices and interest rates movements. On redemption of units, an investor may receive an amount less than the original amount of investment. Prior to investment in the Fund, the investor shall undergo a client suitability assessment procedure to determine whether the Fund is appropriate for him considering his investment objective, risk tolerance, preferences and experience.

TOP HOLDINGS Asset Allocation



Risk Warning: Past performance is not indicative of future results. Our investment management services relate to a variety of investments, each of which can fluctuate in value. The value of portfolios we manage may fall as well as rise, and the investor may not get back the full amount originally invested. The investment risks vary between different types of instruments. For example, for investments involving exposure to a currency other than that in which the portfolio is denominated, changes in the rate of exchange may cause the value of investments, and consequently the value of the portfolio, to go up or down. In the case of a higher volatility portfolio the loss on realization or cancellation may be very high (including total loss of investment), as the value of such an investment may fall suddenly and substantially. In making an investment decision, prospective investors must rely on their own examination of the merits and risks involved. **Disclaimer:** Unless otherwise noted, all information contained herein is sourced from BPI AIA* internal data. The content included herein has been shared with various in-house departments within BPI AIA*, in the ordinary course of completion. BPI AIA* complies with the confidentiality requirements of their respective jurisdictions. Parts of this presentation may be based on information received from sources we consider reliable. We do not represent that all of this information is accurate or complete, however, and it may not be relied upon as such.

BPI-Philam Odyssey Balanced Fund Market Commentary

The Philippine Stock Exchange Index (PSEi) fell in November amid large foreign selling following the outcome of the US Presidential Elections. The Donald Trump 2.0 is perceived to strengthen the U.S Dollar which negatively affect emerging markets. The Philippine Peso depreciated to Php59 level during the month. Moreover, the local 3Q 2024 GDP failed to improve market sentiment as it came out at 5.2%, lower than 5.7% consensus estimate.

The Average Daily Turnover improved to Php5.275 billion or 5.5% higher month-on-month in November. Meanwhile, in terms of foreign activity, foreigners adopted a risk-off stance which bucked the trend of 4 consecutive months net foreign buying. Foreigners sold off US\$349 million for the month which brought their year-to-date flows to US\$305 million net outflow. Their top sold stocks were ICT (-US\$ 71.8 million), ALI (-US\$ 62 million) and BPI (-US\$ 33.8 million). Foreign participation improved to 52%.

On a per stock basis, the top three index gainers for the month include: CNVRG (+1.86%), BDO (+1.11%) and MBT (+0.33%). Meanwhile, the bottom three performers include: BLOOM (-28.83%), ACEN (-19.92%) and WLCON (-19.25%).

The BPI Government Bond Index returned -0.23% in November as Philippine government bond yields rose by an average of 24 basis points (bps). Average daily trading volume for the month reached Php36.1 billion, lower than Php39.5 billion in October, with most trades concentrated in 5-year followed by 1-year papers. Despite the lower average trading volume, foreign investors' fixed income volume was net buying for the month compared to previous month's net selling.

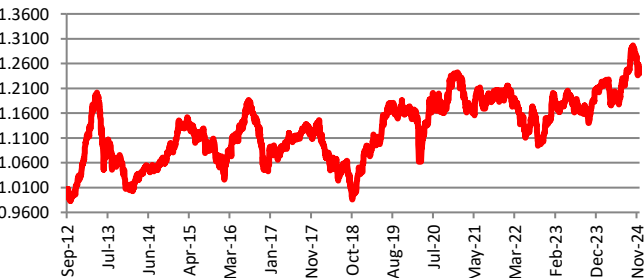
The Bureau of the Treasury (BTr) held two FXTN auctions in November, offering the 5- and 20-year tenors. FXTNs 20-27 (20-year) and 7-67 (5-year) were fully awarded at average yields of 6.095% and 5.954%, respectively.

Locally, October headline inflation rose to 2.3% year-on-year (YoY) from 1.9% YoY in September, well within Bangko Sentral ng Pilipinas' (BSP) forecast range of 2.0% to 2.8% for the month. The pick-up in inflation was driven mainly by faster food inflation due to adverse weather conditions for the month and tapering of favorable base effects from last year. Rice inflation in October also accelerated by 9.6% YoY from September's 5.7% YoY, breaking its 6-month deceleration streak. The reversal of the course due to year-on year base effects as rice inflation slowed in 2023 after the government implemented a rice price ceiling shortly last year.

Cumulative Performance (%)

| YTD | 6 Months | 1YR | 2YR | Since Inception |
|------|----------|------|------|-----------------|
| 2.83 | 4.40 | 4.84 | 7.84 | 24.00 |

NAVPU Graph



| PORTFOLIO COMPOSITION | |
|--|-----------|
| Allocation | % of Fund |
| Equities | 28.22 |
| Government Bonds | 61.67 |
| Corporate Bonds | 5.85 |
| Cash | 3.30 |
| Time Deposits and Money Market | 0.00 |
| Other Receivables - Net of Liabilities | 0.96 |

Top Equity Holdings

| | |
|----------------------------------|-------|
| ① SM Investments Corporation | 3.91% |
| ② Bank of the Philippine Islands | 3.10% |

Top Fixed Income Holdings

| | |
|---------------------------------------|--------|
| ① Fixed Rate Treasury Note 01/25/2034 | 11.46% |
| ② Fixed Rate Treasury Note 11/24/2042 | 11.45% |
| ③ Fixed Rate Treasury Note 07/19/2031 | 7.37% |
| ④ Retail Treasury Bond 02/28/2029 | 7.35% |
| ⑤ Fixed Rate Treasury Note 10/20/2032 | 7.19% |
| ⑥ Fixed Rate Treasury Note 05/23/2044 | 6.51% |
| ⑦ Retail Treasury Bond 08/22/2028 | 3.36% |
| ⑧ Fixed Rate Treasury Note 06/23/2032 | 3.35% |