



FUND FACT SHEET

All data as of December 29, 2023 unless otherwise stated

Fund Objective and Strategy

The Fund aims to achieve long-term capital and income growth by investing in a diversified portfolio of fixed income and equity securities. The Fund aims to outperform its benchmark, which is composed of 70% BPI Philippine Government Bond Index and 30% Philippine Stock Exchange Index.

Fund Details

Fund Manager	BPI WEALTH – A Trust Corporation
Inception Date	September 11, 2012
Fund Classification	Balanced Fund
Fund Size	PHP 821.42 Million
Fund Currency	Philippine Peso
No. of Holdings	46
Fund Management Fee	1.50% per annum

Highest and Lowest Unit Price Achieved

Initial (11 September 2012)	1.0000
Highest (08 January 2021)	1.2422
Lowest (10 October 2012)	0.9829
NAVPU – 29 December 2023	1.2059

Risk Classification

The Fund is suitable for investors with an aggressive profile or for those who take medium- to long-term views. As a marked-to-market UITF, the Fund's net asset value and total return may fall as well as rise as a result of stock prices and interest rates movements. On redemption of units, an investor may receive an amount less than the original amount of investment. Prior to investment in the Fund, the investor shall undergo a client suitability assessment procedure to determine whether the Fund is appropriate for him considering his investment objective, risk tolerance, preferences and experience.

BPI-Philam Odyssey Balanced Fund Market Commentary

The Philippine Stock Exchange Index (PSEi) finished the last month of the year on a strong note. The PSEi rose along with the global markets' rally on optimism spurred by the US Federal Reserve's (The Fed) decision to hold rates. Furthermore, the Fed discussed cutting rates in 2024 bolstering the dovish signal. On the local economic front, November inflation print was recorded at 4.1%, or lower than the 4.4% estimate. The PSEi rose by 3.64% month-on-month to close at 6,450.04 in December.

Trading activity improved to end the year, with average daily turnover registering at US\$89 mil or +25.4% month-on-month. Meanwhile, foreign buying was sustained for another month at US\$18 million with participation level at 49% in December. Foreigners continued to switch from banks to properties given the expected interest-rate scenario.

In terms of stock performance, the top three gainers for the month include: AGI (+15.10%), ICT (+14.37%) and JFC (+10.94%). Meanwhile, the bottom three performers were: ACEN (-8.75%), SMC (-5.46%) and AEV (-4.70%).

The BPI Government Bond Index returned 1.29% in December as the local yield curve bull flattened, dropping 18 basis points (bps) on average. Average daily trading volume for the month amounted to PHP15.48 billion significantly lower than November's PHP29.54 billion with trades mostly seen on the long end of the curve.

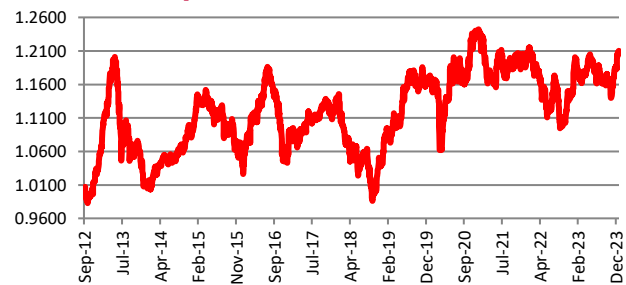
The Bureau of the Treasury (BTr) held only one FXTN auction in December. The 10-year FXTN 10-71, was fully awarded at an average yield of 6.224%. Meanwhile, the scheduled 15-year FXTN issuance was cancelled. Towards the end of the month, the BTr released the auction schedule for the first quarter of 2024, with weekly Treasury Bill auctions and monthly FXTN issuances (3-, 5-, 7- and 10-year tenors) and an additional 20-year issuance in February with an offer size of PHP30 billion each.

In the local space, November headline inflation fell sharply to 4.1% year-on-year from 4.9% last month. The slowdown in inflation was driven by all major subsectors with food inflation decelerating to 5.7% year-on-year from the previous 7% and transport cost contracting by 0.8% year-on-year due to lower global oil prices. The BSP retained its key policy rate at 6.5% during its last monetary board meeting for the year. Despite the inflation figure trending lower, BSP Governor Eli Remolona noted that risks to the inflation outlook remain tilted to the upside.

Cumulative Performance (%)

YTD	6 Months	1YR	2YR	Since Inception
5.49	2.13	5.49	0.02	20.59

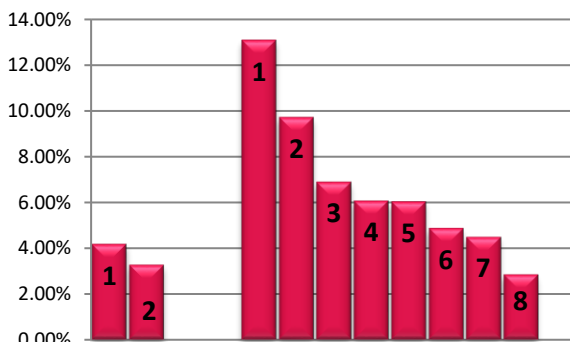
NAVPU Graph



PORTFOLIO COMPOSITION

Allocation	% of Fund
Equities	30.21
Government Bonds	61.06
Corporate Bonds	4.73
Cash	0.54
Time Deposits and Money Market	2.83
Other Receivables - Net of Liabilities	0.63

TOP HOLDINGS Asset Allocation



Top Equity Holdings

① SM Investments Corporation	4.16%
② SM Prime Holdings, Inc.	3.26%

Top Fixed Income Holdings

① Fixed Rate Treasury Note 07/19/2031	13.07%
② Fixed Rate Treasury Note 11/24/2042	9.70%
③ Retail Treasury Bond 06/02/2027	6.88%
④ Fixed Rate Treasury Note 10/20/2032	6.05%
⑤ Retail Treasury Bond 03/07/2028	6.03%
⑥ Retail Treasury Bond 08/22/2028	4.86%
⑦ Fixed Rate Treasury Note 01/10/2029	4.47%
⑧ Time Deposit	2.83%

Risk Warning: Past performance is not indicative of future results. Our investment management services relate to a variety of investments, each of which can fluctuate in value. The value of portfolios we manage may fall as well as rise, and the investor may not get back the full amount originally invested. The investment risks vary between different types of instruments. For example, for investments involving exposure to a currency other than that in which the portfolio is denominated, changes in the rate of exchange may cause the value of investments, and consequently the value of the portfolio, to go up or down. In the case of a higher volatility portfolio the loss on realization or cancellation may be very high (including total loss of investment), as the value of such an investment may fall suddenly and substantially. In making an investment decision, prospective investors must rely on their own examination of the merits and risks involved. **Disclaimer:** Unless otherwise noted, all information contained herein is sourced from BPI AIA* internal data. The content included herein has been shared with various in-house departments within BPI AIA*, in the ordinary course of completion. BPI AIA* complies with the confidentiality requirements of their respective jurisdictions. Parts of this presentation may be based on information received from sources we consider reliable. We do not represent that all of this information is accurate or complete, however, and it may not be relied upon as such.