

FUND FACT SHEET

All data as of July 31, 2025 unless otherwise stated

Fund Objective and Strategy

The Fund aims to achieve a steady stream of income by investing in a diversified portfolio of Philippine Peso denominated high-grade fixed income instruments, such as, but not limited to, government securities, corporate notes and bonds, and fixed income funds. The Fund aims to outperform its composite benchmark, 75% of the 91-day Philippine Treasury Bill– net of tax and 25% of the BPI 1-5 Year Index.

Fund Details

Fund Manager	BPI WEALTH – A Trust Corporation
Inception Date	October 25, 2011
Fund Classification	Bond Fund
Fund Size	PHP 10,873.65 Million
Fund Currency	Philippine Peso
No. of Holdings	85
Fund Management Fee	1.00% per annum

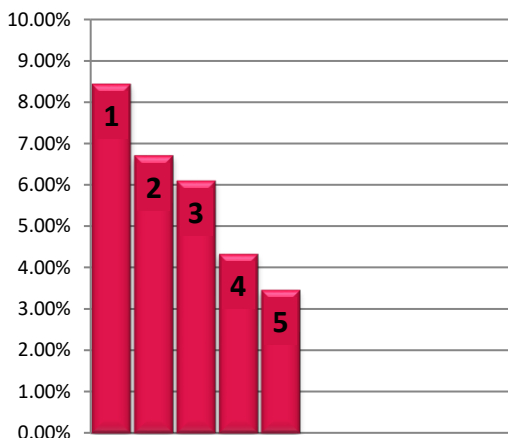
Highest and Lowest Unit Price Achieved

Initial (25 October 2011)	1.0000
Highest (31 July 2025)	1.4998
Lowest (25 October 2011)	1.0000
NAVPU – 31 July 2025	1.4998

Risk Classification

The Fund is suitable for investors who take medium- to long-term views. Prior to investment in the Fund, the investor shall undergo a client suitability assessment procedure to determine whether the Fund is appropriate for him considering his investment objective, risk tolerance, preferences and experience. The Fund's yield, net asset value, and total return may fluctuate as a result of interest rate movements and the changes in credit quality of the investments. On redemption of shares, an investor may receive an amount less than the original amount of the investment. Liquidity risk also needs to be taken into account.

TOP HOLDINGS Asset Allocation



Risk Warning: Past performance is not indicative of future results. Our investment management services relate to a variety of investments, each of which can fluctuate in value. The value of portfolios we manage may fall as well as rise, and the investor may not get back the full amount originally invested. The investment risks vary between different types of instruments. For example, for investments involving exposure to a currency other than that in which the portfolio is denominated, changes in the rate of exchange may cause the value of investments, and consequently the value of the portfolio, to go up or down. In the case of a higher volatility portfolio the loss on realization or cancellation may be very high (including total loss of investment), as the value of such an investment may fall suddenly and substantially. In making an investment decision, prospective investors must rely on their own examination of the merits and risks involved. **Disclaimer:** Unless otherwise noted, all information contained herein is sourced from BPI AIA* internal data. The content included herein has been shared with various in-house departments within BPI AIA*, in the ordinary course of completion. BPI AIA* complies with the confidentiality requirements of their respective jurisdictions. Parts of this presentation may be based on information received from sources we consider reliable. We do not represent that all of this information is accurate or complete, however, and it may not be relied upon as such.

BPI-Philam Peso Bond Fund Market Commentary

The bond market was relatively flat end-July as participants stayed sidelined ahead of final details on the new RTB tranche, with the 10-year benchmark going down only about 2 bps on the month. Headline inflation printed benignly in July at roughly 0.9% year-on-year. At the same time, growth remains positive, with Q2 2025 GDP expanding around 5.5% year-on-year but still below the target of the BSP. Overall, the macro backdrop tilted toward lower rates, reflecting low inflation, slower but still-solid growth, and subdued volatility. Liquidity conditions stayed orderly, with limited knee-jerk moves across the curve. This combination left yields narrowly traded and anchored just below recent levels.

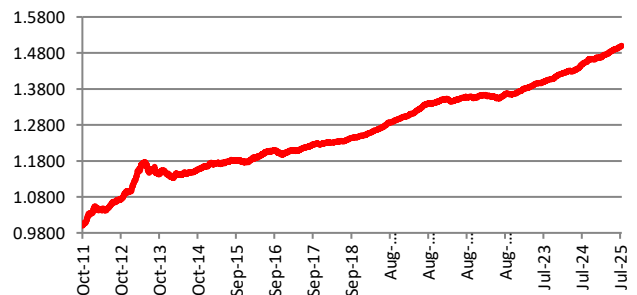
The Bureau of the Treasury announced RTB 519 with an initial offer size of PHP 200bn, pricing scheduled for 5 August, a public offer window through 15 August, and settlement on 20 August. Market expectations are that the accepted size will exceed the initial PHP 200bn, driven largely by the sizable R-513 maturity in August of around PHP 500bn, which will create strong rollover demand from institutional holders.

Looking ahead, the bias remains toward lower yields as benign inflation, slower growth and fading trade policy-related volatility. The combination of slower but still positive growth and the prospect of very strong demand for RTB 519 suggests continued compression, particularly in the belly of the curve. Key risks that could derail this path include a sudden global risk-off episode, materially higher imported inflation, or a surprise change in BSP guidance. For now, however, the prevailing view is that subdued inflation, ample demand for government supply, and a benign macro backdrop keep yields on a downward trajectory. Investors should monitor upcoming inflation prints and auction subscription results for confirmation.

Cumulative Performance (%)

YTD	6 Months	1YR	2YR	Since Inception
2.32	1.99	3.48	7.11	49.98

NAVPU Graph



PORTFOLIO COMPOSITION

Allocation	% of Fund
Government	42.82
Corporates	44.57
Fixed Income Funds	0.00
Cash & Cash Equivalents	12.18
Preferreds	0.77