

FUND FACT SHEET

All data as of September 30, 2025 unless otherwise stated

Fund Objective and Strategy

The Fund aims to achieve a steady stream of income by investing in a diversified portfolio of Philippine Peso denominated high-grade fixed income instruments, such as, but not limited to, government securities, corporate notes and bonds, and fixed income funds. The Fund aims to outperform its composite benchmark, 75% of the 91-day Philippine Treasury Bill– net of tax and 25% of the BPI 1-5 Year Index.

Fund Details

Fund Manager	BPI WEALTH – A Trust Corporation
Inception Date	October 25, 2011
Fund Classification	Bond Fund
Fund Size	PHP 10,967.29 Million
Fund Currency	Philippine Peso
No. of Holdings	88
Fund Management Fee	1.00% per annum

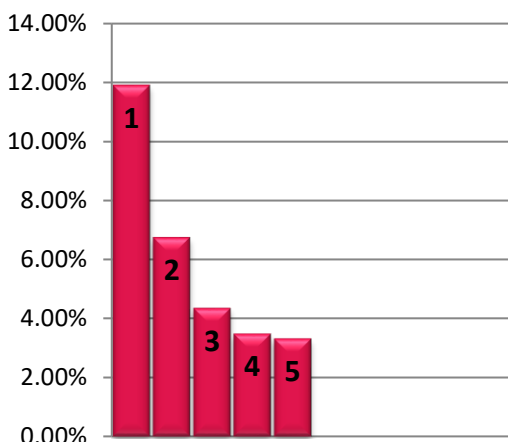
Highest and Lowest Unit Price Achieved

Initial (25 October 2011)	1.0000
Highest (25 September 2025)	1.5118
Lowest (25 October 2011)	1.0000
NAVPU –30 September 2025	1.5118

Risk Classification

The Fund is suitable for investors who take medium- to long-term views. Prior to investment in the Fund, the investor shall undergo a client suitability assessment procedure to determine whether the Fund is appropriate for him considering his investment objective, risk tolerance, preferences and experience. The Fund's yield, net asset value, and total return may fluctuate as a result of interest rate movements and the changes in credit quality of the investments. On redemption of shares, an investor may receive an amount less than the original amount of the investment. Liquidity risk also needs to be taken into account.

TOP HOLDINGS Asset Allocation



Risk Warning: Past performance is not indicative of future results. Our investment management services relate to a variety of investments, each of which can fluctuate in value. The value of portfolios we manage may fall as well as rise, and the investor may not get back the full amount originally invested. The investment risks vary between different types of instruments. For example, for investments involving exposure to a currency other than that in which the portfolio is denominated, changes in the rate of exchange may cause the value of investments, and consequently the value of the portfolio, to go up or down. In the case of a higher volatility portfolio the loss on realization or cancellation may be very high (including total loss of investment), as the value of such an investment may fall suddenly and substantially. In making an investment decision, prospective investors must rely on their own examination of the merits and risks involved. **Disclaimer:** Unless otherwise noted, all information contained herein is sourced from BPI AIA* internal data. The content included herein has been shared with various in-house departments within BPI AIA*, in the ordinary course of completion. BPI AIA* complies with the confidentiality requirements of their respective jurisdictions. Parts of this presentation may be based on information received from sources we consider reliable. We do not represent that all of this information is accurate or complete, however, and it may not be relied upon as such.

BPI-Philam Peso Bond Fund Market Commentary

In September, local government bond yields moved in mixed directions. Short-term yields (1 year and below) declined by an average of 28 basis points, reflecting the market's response to easing inflation and monetary policy. On the other hand, longer-term yields (1 to 25 years) saw a slight increase, averaging a 1.6 basis point rise. Despite these movements, returns remained positive, with the BPI Government Bond Index gaining 0.27% and the BPI Money Market Index up 0.44% for the month.

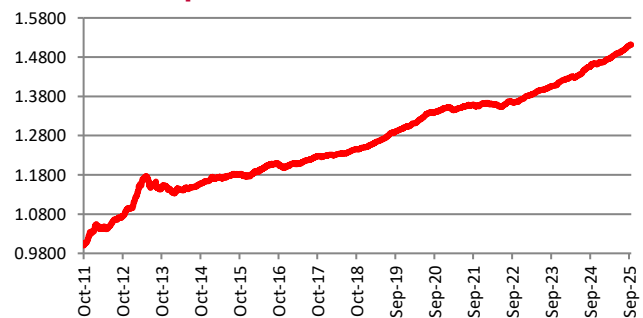
The Bureau of the Treasury (BTr) continued its regular weekly auctions of Fixed Rate Treasury Notes (FXTNs), offering various tenors from 3 to 20 years. Most of the bonds, specifically the 3-, 5-, 7-, and 10-year FXTNs, were fully awarded at competitive yields ranging from 5.605% to 5.939%. The 20-year FXTN was only partially awarded, with an average yield of 6.421%, indicating selective investor appetite for longer durations.

Meanwhile, local inflation rose to 1.5% in August, up from 0.9% in July, driven mainly by higher food prices, particularly rice and vegetables, as well as increased transport costs due to fuel price adjustments. Despite the uptick, inflation remained within the Bangko Sentral ng Pilipinas' (BSP) target range of 2–4%, suggesting that price pressures were still manageable. The central bank is forecasting inflation will average 1.7% this year, before rising to 3.3% in 2026 and 3.4% in 2027.

Cumulative Performance (%)

YTD	6 Months	1YR	2YR	Since Inception
3.14	2.13	3.38	7.50	51.18

NAVPU Graph



PORTFOLIO COMPOSITION

Allocation	% of Fund
Government	50.15
Corporates	47.27
Fixed Income Funds	0.00
Cash & Cash Equivalents	1.81
Preferreds	0.77

① Retail Treasury Bond 2030	11.91%
② Retail Treasury Bond 2029	6.75%
③ Fixed Rate Treasury Note 2032	4.35%
④ Aboitiz Equity Ventures, Inc. 2027	3.48%
⑤ Fixed Rate Treasury Note 2044	3.32%