

# FUND FACT SHEET

All data as of March 27, 2024 unless otherwise stated

## Fund Objective and Strategy

The Fund intends to achieve for its participants total return through a combination of current income and long-term capital appreciation by investing in listed companies that have high dividend yields or have established a history of dividend payouts. The Fund aims to provide returns in excess of the return of the Philippine Stock Exchange index (PSEi).

## Fund Details

Fund Manager	BPI WEALTH – A Trust Corporation
Inception Date	March 12, 2015
Fund Classification	Equity Fund
Fund Size	PHP 4,994.07 Million
Fund Currency	Philippine Peso
No. of Holdings	26
Fund Management Fee	1.50% per annum

## Highest and Lowest Unit Price Achieved

Initial (12 March 2015)	1.0000
Highest (30 January 2018)	1.1268
Lowest (17 March 2020)	0.6719
NAVPU – 27 March 2024	0.9976

## Risk Classification

The Fund is suitable for investors with an aggressive profile or for those who take long-term views. As a marked-to-market UITF, the Fund's net asset value and total return may fall as well as rise as a result of stock prices and interest rates movements. On redemption of units, an investor may receive an amount less than the original amount of investment. Prior to investment in the Fund, the investor shall undergo a client suitability assessment procedure to determine whether the Fund is appropriate for him considering his investment objective, risk tolerance, preferences and experience.

## BPI-Philam Philippine High Dividend Equity Fund Market Commentary

The Philippine Stock Exchange Index (PSEi) slightly move down by -0.59% month-on-month closing March at 6,900.53. Sentiment was dampened by inflation data showing to be sticky, resulting in a pushback in the aggressive rate cut narrative. Domestic inflation accelerated after four consecutive months of decline as the Feb '24 headline CPI came in at 3.4% (vs. consensus estimates of 3.0%). Furthermore, corporate earnings results came out underwhelming and the FTSE rebalancing also prompted foreign outflows.

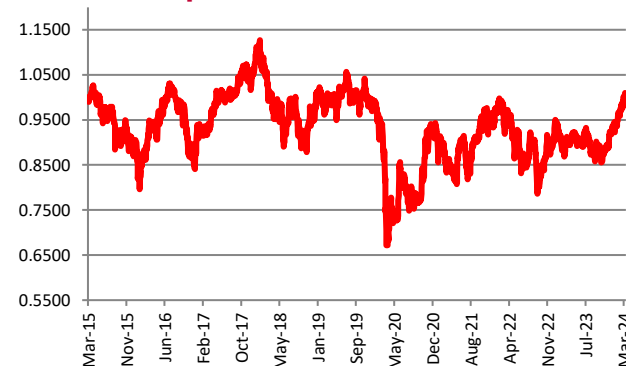
In relation, trading activity improved in March, with average daily turnover at US\$124 million or 30% higher month-on-month (MoM). Albeit foreign selling registered at US\$45 million, a reversal from last month's US\$128 million.

On a per name basis, the top three index gainers for the month were: CNPF (+19.40%), CNVRG (+10.67%) and ICT (+10.03%). On the flip side, the bottom three performers were: WLCON (-17.69%), NIKL (-11.89%) and AEV (-11.60%).

## Cumulative Performance (%)

YTD	6 Months	1YR	2YR	Since Inception
8.68	11.49	10.82	2.61	-0.24

## NAVPU Graph

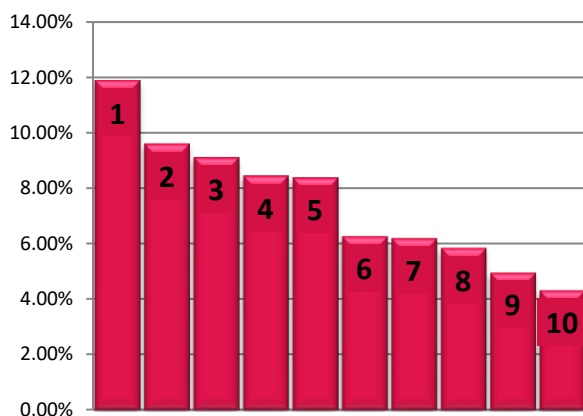


## PORTFOLIO COMPOSITION

Allocation	% of Fund
Equities	97.47
Cash	0.16
Time Deposits and Money Market	2.83
Other Receivables - Net of Liabilities	-0.46

## TOP 10 HOLDINGS

### Asset Allocation



① SM Investments Corporation	11.87%
② Bank of the Philippine Islands	9.58%
③ Int'l. Container Terminal Services, Inc.	9.10%
④ BDO Unibank, Inc.	8.44%
⑤ SM Prime Holdings, Inc.	8.37%
⑥ PLDT Inc.	6.25%
⑦ Manila Electric Company	6.18%
⑧ Metropolitan Bank & Trust Co.	5.84%
⑨ Globe Telecom, Inc.	4.95%
⑩ Ayala Land, Inc.	4.31%

**Risk Warning:** Past performance is not indicative of future results. Our investment management services relate to a variety of investments, each of which can fluctuate in value. The value of portfolios we manage may fall as well as rise, and the investor may not get back the full amount originally invested. The investment risks vary between different types of instruments. For example, for investments involving exposure to a currency other than that in which the portfolio is denominated, changes in the rate of exchange may cause the value of investments, and consequently the value of the portfolio, to go up or down. In the case of a higher volatility portfolio the loss on realization or cancellation may be very high (including total loss of investment), as the value of such an investment may fall suddenly and substantially. In making an investment decision, prospective investors must rely on their own examination of the merits and risks involved. **Disclaimer:** Unless otherwise noted, all information contained herein is sourced from BPI AIA\* internal data. The content included herein has been shared with various in-house departments within BPI AIA\*, in the ordinary course of completion. BPI AIA\* complies with the confidentiality requirements of their respective jurisdictions. Parts of this presentation may be based on information received from sources we consider reliable. We do not represent that all of this information is accurate or complete, however, and it may not be relied upon as such.